

Anti-CASP3 antibody (55-160) (STJ113869)

STJ113869

GENERAL INFORMATION

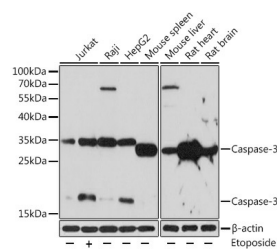
Product Type	Primary antibodies
Short Description	Rabbit polyclonal antibody anti-Caspase-3 (55-160) is suitable for use in Western Blot, Immunohistochemistry, Immunofluorescence and Immunoprecipitation.
Applications	WB, IHC, IF, IP
Host/Source	Rabbit
Reactivity	Human, Mouse, Rat

PRODUCT PROPERTIES

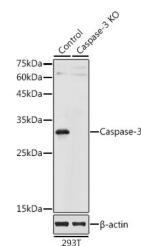
Clonality	Polyclonal
Clone ID	
Concentration	
Conjugation	Unconjugated
Purification	Affinity purification
Dilution Range	WB 1:500-1:2000 IHC 1:50-1:100 IF 1:50-1:100 IP 1:50-1:100
Formulation	PBS containing 0.02% Sodium Azide, 50% Glycerol, pH7.3.
Isotype	IgG
Storage Instruction	Store in a freezer at -20°C and avoid freeze-thaw cycles.

TARGET INFORMATION

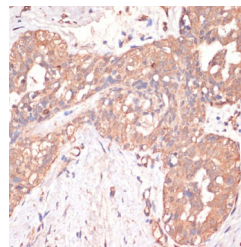
Gene ID	836
Gene Symbol	CASP3
Uniprot ID	CASP3_HUMAN
Immunogen	Recombinant fusion protein containing a sequence corresponding to amino acids 55-160 of human Caspase-3 (NP_004337.2).
Immunogen Region	55-160
Specificity	
Immunogen Sequence	



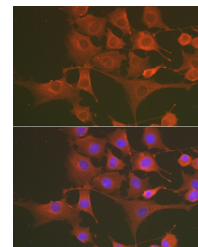
Western blot analysis of extracts of various cell lines, using Caspase-3 rabbit polyclonal antibody (STJ113869) at 1:1000 dilution. Jurkat cells were treated by Etoposide (25 μ M) at 37 °C for 5 hours. Secondary antibody: HRP Goat Anti-rabbit IgG (H+L) at 1:10000 dilution. Lysates/proteins: 25ug per lane. Blocking buffer: 3% BSA. Detection: ECL Basic Kit. Exposure time: 3min.



Western blot analysis of extracts from normal (control) and Caspase-3 knockout (KO) 293T cells, using Caspase-3 antibody (STJ113869) at 1:1000 dilution. Secondary antibody: HRP Goat Anti-rabbit IgG (H+L) at 1:10000 dilution. Lysates/proteins: 25ug per lane. Blocking buffer: 3% nonfat dry milk in TBST. Detection: ECL Basic Kit. Exposure time: 5s.



Immunohistochemistry of paraffin-embedded human mammary cancer using Caspase-3 antibody (STJ113869) at dilution of 1:200 (40x lens).



Immunofluorescence analysis of NIH/3T3 cells using [KO Validated] Caspase-3 rabbit polyclonal antibody (STJ113869) at dilution of 1:100 (40x lens). Blue: DAPI for nuclear staining.

This product is suitable for in-vitro studies under the RESEARCH USE ONLY [RUO] licence. This product must not be used as for diagnostic or other medical purposes.
St John's Laboratory Ltd, Knowledge Dock Business Centre, University Way, London, E16 2RD | Tel: 0208 223 3081