

Anti-NFE2L2 antibody (366-605) (STJ113718)

STJ113718

GENERAL INFORMATION

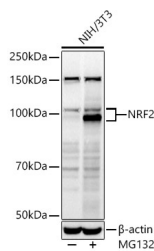
Product Type	Primary antibodies
Short Description	Rabbit polyclonal antibody anti-NRF2 (366-605) is suitable for use in Western Blot, Immunohistochemistry and Immunofluorescence.
Applications	WB, IHC, IF
Host/Source	Rabbit
Reactivity	Human, Mouse, Rat

PRODUCT PROPERTIES

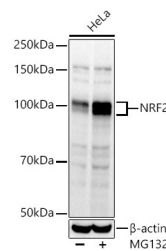
Clonality	Polyclonal
Clone ID	
Concentration	
Conjugation	Unconjugated
Purification	Affinity purification
Dilution Range	WB 1:500-1:2000 IHC 1:50-1:200 IF 1:50-1:200
Formulation	PBS containing 0.02% Sodium Azide, 50% Glycerol, pH7.3.
Isotype	IgG
Storage Instruction	Store in a freezer at -20°C and avoid freeze-thaw cycles.

TARGET INFORMATION

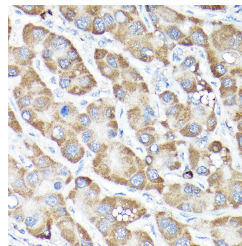
Gene ID	4780
Gene Symbol	NFE2L2
Uniprot ID	NF2L2_HUMAN
Immunogen	Recombinant fusion protein containing a sequence corresponding to amino acids 366-605 of human NRF2 (NP_006155.2).
Immunogen Region	366-605
Specificity	
Immunogen Sequence	



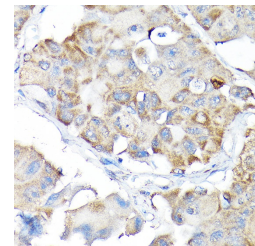
Western blot analysis of extracts of NIH/3T3 cells, using NRF2 antibody (STJ113718) at 1:1000 dilution. NIH/3T3 cells were treated by MG132 (50 μ M) at 37 °C for 90 minutes. Secondary antibody: HRP Goat Anti-rabbit IgG (H+L) at 1:10000 dilution. Lysates/proteins: 25ug per lane. Blocking buffer: 3% nonfat dry milk in TBST. Detection: ECL Basic Kit. Exposure time: 30s.



Western blot analysis of extracts of HeLa cells, using NRF2 antibody (STJ113718) at 1:1000 dilution. HeLa cells were treated by MG132 (50 μ M) at 37 °C for 90 minutes. Secondary antibody: HRP Goat Anti-rabbit IgG (H+L) at 1:10000 dilution. Lysates/proteins: 25ug per lane. Blocking buffer: 3% nonfat dry milk in TBST. Detection: ECL Basic Kit. Exposure time: 60s.



Immunohistochemistry of paraffin-embedded human liver cancer using NRF2 rabbit polyclonal antibody (STJ113718) at dilution of 1:200 (40x lens). Perform high pressure antigen retrieval with 10 mM citrate buffer pH 6, 0 before commencing with immunohistochemistry staining protocol.



Immunohistochemistry of paraffin-embedded human lung cancer using NRF2 rabbit polyclonal antibody (STJ113718) at dilution of 1:200 (40x lens). Perform high pressure antigen retrieval with 10 mM citrate buffer pH 6, 0 before commencing with immunohistochemistry staining protocol.

This product is suitable for in-vitro studies under the RESEARCH USE ONLY [RUO] licence. This product must not be used as for diagnostic or other medical purposes.

St John's Laboratory Ltd, Knowledge Dock Business Centre, University Way, London, E16 2RD | Tel: 0208 223 3081