

Anti-EEF1G antibody (168-437) (STJ113571)

STJ113571

GENERAL INFORMATION

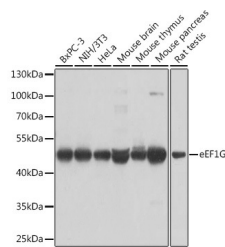
Product Type	Primary antibodies
Short Description	Rabbit polyclonal antibody anti-EEF1G (168-437) is suitable for use in Western Blot, Immunohistochemistry and Immunofluorescence.
Applications	WB, IHC, IF
Host/Source	Rabbit
Reactivity	Human, Mouse, Rat

PRODUCT PROPERTIES

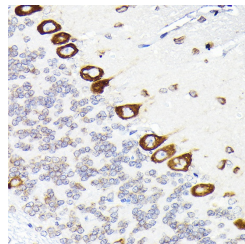
Clonality	Polyclonal
Clone ID	
Concentration	
Conjugation	Unconjugated
Purification	Affinity purification
Dilution Range	WB 1:500-1:2000 IHC 1:50-1:100 IF 1:50-1:100
Formulation	PBS containing 0.02% Sodium Azide, 50% Glycerol, pH7.3.
Isotype	IgG
Storage Instruction	Store in a freezer at -20°C and avoid freeze-thaw cycles.

TARGET INFORMATION

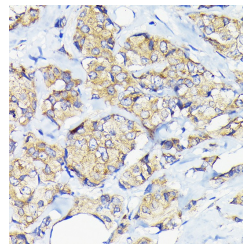
Gene ID	1937
Gene Symbol	EEF1G
Uniprot ID	EF1G_HUMAN
Immunogen	Recombinant fusion protein containing a sequence corresponding to amino acids 168-437 of human eEF1G (NP_001395.1).
Immunogen Region	168-437
Specificity	
Immunogen Sequence	



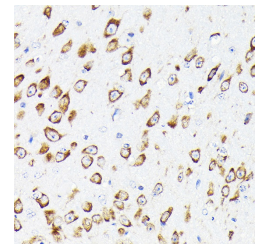
Western blot analysis of extracts of various cell lines, using eEF1G antibody (STJ113571) at 1:1000 dilution. Secondary antibody: HRP Goat Anti-rabbit IgG (H+L) at 1:10000 dilution. Lysates/proteins: 25µg per lane. Blocking buffer: 3% nonfat dry milk in TBST. Detection: ECL Basic Kit. Exposure time: 5s.



Immunohistochemistry of paraffin-embedded rat brain using eEF1G rabbit polyclonal antibody (STJ113571) at dilution of 1:50 (40x lens).



Immunohistochemistry of paraffin-embedded human breast cancer using eEF1G rabbit polyclonal antibody (STJ113571) at dilution of 1:50 (40x lens).



Immunohistochemistry of paraffin-embedded mouse brain using eEF1G rabbit polyclonal antibody (STJ113571) at dilution of 1:50 (40x lens).

This product is suitable for in-vitro studies under the RESEARCH USE ONLY [RUO] licence. This product must not be used as for diagnostic or other medical purposes.
St John's Laboratory Ltd, Knowledge Dock Business Centre, University Way, London, E16 2RD | Tel: 0208 223 3081