

Anti-SMARCA4 antibody (30-130) (STJ113555)

STJ113555

GENERAL INFORMATION

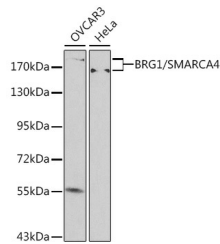
Product Type	Primary antibodies
Short Description	Rabbit polyclonal antibody anti-SMARCA4 (30-130) is suitable for use in Western Blot, Immunohistochemistry and Immunofluorescence.
Applications	WB, IHC, IF
Host/Source	Rabbit
Reactivity	Human

PRODUCT PROPERTIES

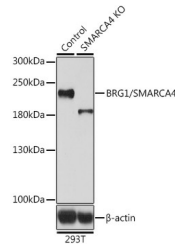
Clonality	Polyclonal
Clone ID	
Concentration	
Conjugation	Unconjugated
Purification	Affinity purification
Dilution Range	WB 1:500-1:2000 IHC 1:50-1:100 IF 1:20-1:50
Formulation	PBS containing 0.02% Sodium Azide, 50% Glycerol, pH7.3.
Isotype	IgG
Storage Instruction	Store in a freezer at -20°C and avoid freeze-thaw cycles.

TARGET INFORMATION

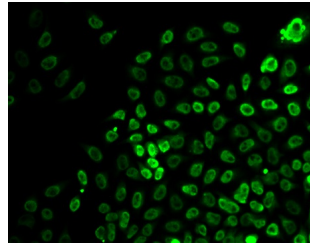
Gene ID	6597
Gene Symbol	SMARCA4
Uniprot ID	SMCA4_HUMAN
Immunogen	A synthetic peptide corresponding to a sequence within amino acids 30-130 of human BRG1/BRG1/SMARCA4 (NP_003063.2).
Immunogen Region	30-130
Specificity	
Immunogen Sequence	



Western blot analysis of extracts of various cell lines, using BRG1/BRG1/SMARCA4 antibody (STJ113555) at 1:500 dilution. Secondary antibody: HRP Goat Anti-rabbit IgG (H+L) at 1:10000 dilution. Lysates/proteins: 25ug per lane. Blocking buffer: 3% nonfat dry milk in TBST.



Western blot analysis of extracts from normal (control) and BRG1/BRG1/SMARCA4 knockout (KO) 293T cells, using BRG1/BRG1/SMARCA4 antibody (STJ113555) at 1:500 dilution. Secondary antibody: HRP Goat Anti-rabbit IgG (H+L) at 1:10000 dilution. Lysates/proteins: 25ug per lane. Blocking buffer: 3% nonfat dry milk in TBST. Detection: ECL Basic Kit. Exposure time: 90s.



Immunofluorescence analysis of HeLa cells using BRG1/BRG1/SMARCA4 antibody (STJ113555).