

Anti-Phospho-PRKCD/PRKCQ-S643/676 antibody (STJ113501)

STJ113501

GENERAL INFORMATION

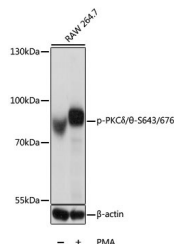
Product Type	Primary antibodies
Short Description	Rabbit polyclonal antibody anti-Phospho-PKC Delta/Theta-S643/676 is suitable for use in Western Blot.
Applications	WB
Host/Source	Rabbit
Reactivity	Human, Mouse

PRODUCT PROPERTIES

Clonality	Polyclonal
Clone ID	
Concentration	
Conjugation	Unconjugated
Purification	Affinity purification
Dilution Range	WB 1:500-1:2000
Formulation	PBS containing 0.02% Sodium Azide, 50% Glycerol, pH7.3.
Isotype	IgG
Storage Instruction	Store in a freezer at -20°C and avoid freeze-thaw cycles.

TARGET INFORMATION

Gene ID	5588 5580
Gene Symbol	PRKCQ PRKCD
Uniprot ID	KPCT_HUMAN KPCD_HUMAN
Immunogen	A phospho specific peptide corresponding to residues surrounding S643/676 of human PKC Delta/Theta
Immunogen Region	
Specificity	
Immunogen Sequence	



Western blot analysis of extracts of RAW264.7 cells, using Phospho-PRK Delta/ Theta-S643/676 antibody (STJ113501) at 1:1000 dilution. RAW 264.7 cells were treated by PMA (200 nM) for 30 minutes. Secondary antibody: HRP Goat Anti-rabbit IgG (H+L) at 1:10000 dilution. Lysates/proteins: 25ug per lane. Blocking buffer: 3% BSA. Detection: ECL Basic Kit. Exposure time: 5s.

This product is suitable for in-vitro studies under the RESEARCH USE ONLY [RUO] licence. This product must not be used as for diagnostic or other medical purposes.
St John's Laboratory Ltd, Knowledge Dock Business Centre, University Way, London, E16 2RD | Tel: 0208 223 3081