

Anti-Phospho-RPS6-S240/244 antibody (STJ113488)

STJ113488

GENERAL INFORMATION

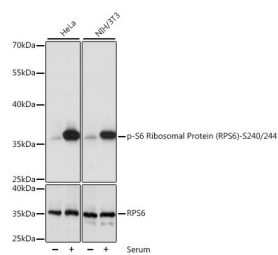
Product Type	Primary antibodies
Short Description	Rabbit polyclonal antibody anti-Phospho-RPS6-S240/244.
Applications	
Host/Source	Rabbit
Reactivity	

PRODUCT PROPERTIES

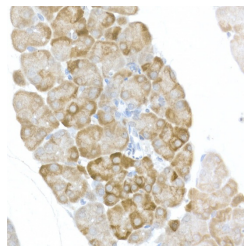
Clonality	Polyclonal
Clone ID	
Concentration	
Conjugation	Unconjugated
Purification	Affinity purification
Dilution Range	
Formulation	
Isotype	IgG
Storage Instruction	

TARGET INFORMATION

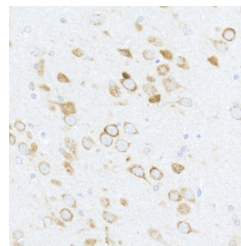
Gene ID	6194
Gene Symbol	RPS6
Uniprot ID	RS6_HUMAN
Immunogen	A synthetic phosphorylated peptide around S240 & S244 of human RPS6 (NP_001001.2).
Immunogen Region	
Specificity	
Immunogen Sequence	



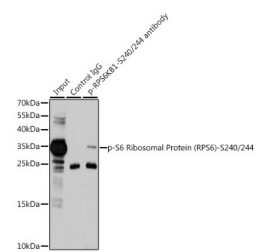
Western blot analysis of extracts of various cell lines, using Phospho-S6 Ribosomal Protein (RPS6) -S240/244 antibody (STJ113488) at 1:1000 dilution or RPS6 antibody (STJ27852). HeLa cells were treated by 10% FBS at 37 °C for 30 minutes after serum-starvation overnight. NIH/3T3 cells were treated by 10% FBS at 37 °C for 30 minutes after serum-starvation overnight. Secondary antibody: HRP Goat Anti-rabbit IgG (H+L) at 1:10000 dilution. Lysates/proteins: 25ug per lane. Blocking buffer: 3% BSA. Detection: ECL Basic Kit. Exposure time: 1s.



Immunohistochemistry of paraffin-embedded mouse pancreas using Phospho-S6 Ribosomal Protein (RPS6) -S240/244 rabbit polyclonal antibody (STJ113488) at dilution of 1:50 (40x lens). Perform high pressure antigen retrieval with 10 mM citrate buffer pH 6.0 before commencing with immunohistochemistry staining protocol.



Immunohistochemistry of paraffin-embedded rat brain using Phospho-S6 Ribosomal Protein (RPS6) -S240/244 rabbit polyclonal antibody (STJ113488) at dilution of 1:50 (40x lens). Perform high pressure antigen retrieval with 10 mM citrate buffer pH 6.0 before commencing with immunohistochemistry staining protocol.



Immunoprecipitation analysis of 200ug extracts of 293T cells, using 3 ug Phospho-S6 Ribosomal Protein (RPS6) -S240/244 polyclonal antibody (STJ113488). Western blot was performed from the immunoprecipitate using Phospho-RPS6-S240/244 polyclonal antibody (STJ113488) at a dilution of 1:1000. 293T cells were treated by PMA/TPA (200 nM) at 37 °C for 30 minutes after serum-starvation overnight.

This product is suitable for in-vitro studies under the RESEARCH USE ONLY [RUO] licence. This product must not be used as for diagnostic or other medical purposes.
St John's Laboratory Ltd, Knowledge Dock Business Centre, University Way, London, E16 2RD | Tel: 0208 223 3081