

Anti-Phospho-PRKCA/PRKCB/PRKCD/PRKCE/PRKCG/PRKCH/PRKCI/PRKCQ/PRKCZ-T410 antibody (STJ113486)

STJ113486

GENERAL INFORMATION

Product Type	Primary antibodies
Short Description	Rabbit polyclonal antibody anti-Phospho-PKC (pan) (zeta)-T410 is suitable for use in Western Blot.
Applications	WB
Host/Source	Rabbit
Reactivity	Human, Mouse, Rat

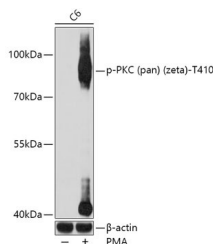
PRODUCT PROPERTIES

Clonality	Polyclonal
Clone ID	
Concentration	
Conjugation	Unconjugated
Purification	Affinity purification
Dilution Range	WB 1:500-1:2000
Formulation	PBS containing 0.02% Sodium Azide, 50% Glycerol, pH7.3.
Isotype	IgG
Storage Instruction	Store in a freezer at -20°C and avoid freeze-thaw cycles.

TARGET INFORMATION

Gene ID	5590
	5584
	5580
	PRKCZ
	PRKCI
	KPCZ_HUMAN
	KPCI_HUMAN
	KPCD_HUMAN
	<

Immunogen	A synthetic phosphorylated peptide around T410 of human PRKCZ (NP_002735.3).
Immunogen Region	
Specificity	
Immunogen Sequence	



Western blot analysis of extracts of C6 cells, using Phospho-PKC (pan) (zeta)-T410 antibody (STJ113486) at 1:1000 dilution. C6 cells were treated by PMA/TPA (200 nM) at 37 °C for 30 minutes after serum-starvation overnight. Secondary antibody: HRP-Goat Anti-rabbit IgG (H+L) at 1:10000 dilution. Lysates/proteins: 25ug per lane. Blocking buffer: 3% BSA. Detection: ECL Basic Kit. Exposure time: 90s.

This product is suitable for in-vitro studies under the RESEARCH USE ONLY [RUO] licence. This product must not be used as for diagnostic or other medical purposes.
St John's Laboratory Ltd, Knowledge Dock Business Centre, University Way, London, E16 2RD | Tel: 0208 223 3081