

Anti-Phospho-RAF1-S259 antibody (STJ113482)

STJ113482

GENERAL INFORMATION

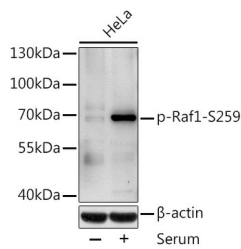
Product Type	Primary antibodies
Short Description	Rabbit polyclonal antibody anti-Phospho-Raf1-S259 is suitable for use in Western Blot and Immunoprecipitation.
Applications	WB, IP
Host/Source	Rabbit
Reactivity	Human, Mouse

PRODUCT PROPERTIES

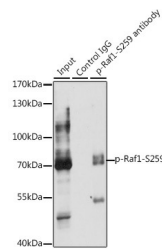
Clonality	Polyclonal
Clone ID	
Concentration	
Conjugation	Unconjugated
Purification	Affinity purification
Dilution Range	WB 1:500-1:2000 IP 1:50-1:100
Formulation	PBS containing 0.02% Sodium Azide, 50% Glycerol, pH7.3.
Isotype	IgG
Storage Instruction	Store in a freezer at -20°C and avoid freeze-thaw cycles.

TARGET INFORMATION

Gene ID	5894
Gene Symbol	RAF1
Uniprot ID	RAF1_HUMAN
Immunogen	A synthetic phosphorylated peptide around S259 of human Raf1 (NP_002871.1).
Immunogen Region	
Specificity	
Immunogen Sequence	



Western blot analysis of extracts of HeLa cells, using Phospho-Raf1-S259 antibody (STJ113482) at 1:1000 dilution. HeLa cells were treated by 10% FBS after serum-starvation overnight. Secondary antibody: HRP Goat Anti-rabbit IgG (H+L) at 1:10000 dilution. Lysates/proteins: 25ug per lane. Blocking buffer: 3% BSA.



Immunoprecipitation analysis of 200ug extracts of HeLa cells, using 3 ug Phospho-Raf1-S259 polyclonal antibody (STJ113482). Western blot was performed from the immunoprecipitate using Phospho-Raf1-S259 polyclonal antibody (STJ113482) at a dilution of 1:1000. HeLa cells were treated by 10% FBS at 37 °C for 30 minutes after serum-starvation overnight.