

Anti-AKT1 antibody (STJ113458)

STJ113458

GENERAL INFORMATION

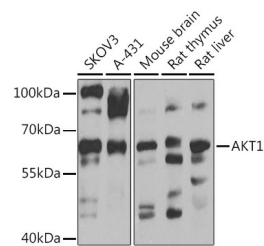
| | |
|--------------------------|---|
| Product Type | Primary antibodies |
| Short Description | Rabbit polyclonal antibody anti-AKT1 is suitable for use in Western Blot and Immunoprecipitation. |
| Applications | WB, IP |
| Host/Source | Rabbit |
| Reactivity | Human, Mouse, Rat, Zebrafish |

PRODUCT PROPERTIES

| | |
|----------------------------|---|
| Clonality | Polyclonal |
| Clone ID | |
| Concentration | |
| Conjugation | Unconjugated |
| Purification | Affinity purification |
| Dilution Range | WB 1:500-1:2000 IP 1:20-1:50 |
| Formulation | PBS containing 0.02% Sodium Azide, 50% Glycerol, pH7.3. |
| Isotype | IgG |
| Storage Instruction | Store in a freezer at -20°C and avoid freeze-thaw cycles. |

TARGET INFORMATION

| | |
|---------------------------|-----------------------------------|
| Gene ID | 207 |
| Gene Symbol | AKT1 |
| Uniprot ID | AKT1_HUMAN |
| Immunogen | Recombinant protein of human AKT1 |
| Immunogen Region | |
| Specificity | |
| Immunogen Sequence | |



This product is suitable for in-vitro studies under the RESEARCH USE ONLY [RUO] licence. This product must not be used as for diagnostic or other medical purposes.
St John's Laboratory Ltd, Knowledge Dock Business Centre, University Way, London, E16 2RD | Tel: 0208 223 3081