

Anti-CAT antibody (1-225) (STJ113364)

STJ113364

GENERAL INFORMATION

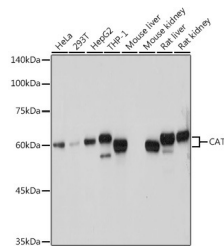
Product Type	Primary antibodies
Short Description	Rabbit polyclonal antibody anti-CAT (1-225) is suitable for use in Western Blot and Immunoprecipitation.
Applications	WB, IP
Host/Source	Rabbit
Reactivity	Human, Mouse, Rat

PRODUCT PROPERTIES

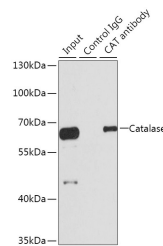
Clonality	Polyclonal
Clone ID	
Concentration	
Conjugation	Unconjugated
Purification	Affinity purification
Dilution Range	WB 1:1000-1:3000 IP 1:20-1:50
Formulation	PBS containing 0.02% Sodium Azide, 50% Glycerol, pH7.3.
Isotype	IgG
Storage Instruction	Store in a freezer at -20°C and avoid freeze-thaw cycles.

TARGET INFORMATION

Gene ID	847
Gene Symbol	CAT
Uniprot ID	CATA_HUMAN
Immunogen	Recombinant fusion protein containing a sequence corresponding to amino acids 1-225 of human Catalase (NP_001743.1).
Immunogen Region	1-225
Specificity	
Immunogen Sequence	



Western blot analysis of extracts of various cell lines, using Catalase antibody (STJ113364) at 1:1000 dilution. Secondary antibody: HRP Goat Anti-rabbit IgG (H+L) at 1:10000 dilution. Lysates/proteins: 25ug per lane. Blocking buffer: 3% nonfat dry milk in TBST. Detection: ECL Basic Kit. Exposure time: 1s.



Immunoprecipitation analysis of 100ug extracts of HepG2 cells using 3ug Catalase antibody (STJ113364). Western blot was performed from the immunoprecipitate using Catalase antibody (STJ113364) at a dilution of 1:1000.

This product is suitable for in-vitro studies under the RESEARCH USE ONLY [RUO] licence. This product must not be used as for diagnostic or other medical purposes.
St John's Laboratory Ltd, Knowledge Dock Business Centre, University Way, London, E16 2RD | Tel: 0208 223 3081