

Anti-MT-CO2 antibody (100-200) (STJ113171)

STJ113171

GENERAL INFORMATION

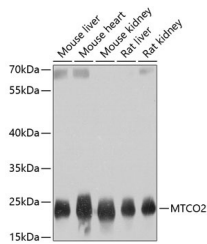
Product Type	Primary antibodies
Short Description	Rabbit polyclonal antibody anti-MTCO2 (100-200) is suitable for use in Western Blot and Immunohistochemistry.
Applications	WB, IHC
Host/Source	Rabbit
Reactivity	Human, Mouse, Rat

PRODUCT PROPERTIES

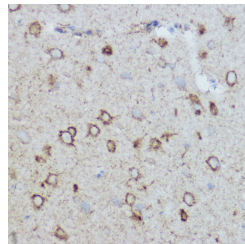
Clonality	Polyclonal
Clone ID	
Concentration	
Conjugation	Unconjugated
Purification	Affinity purification
Dilution Range	WB 1:500-1:2000 IHC 1:50-1:100
Formulation	PBS containing 0.02% Sodium Azide, 50% Glycerol, pH7.3.
Isotype	IgG
Storage Instruction	Store in a freezer at -20°C and avoid freeze-thaw cycles.

TARGET INFORMATION

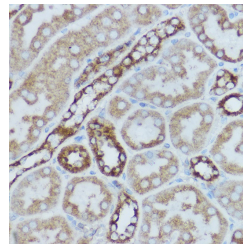
Gene ID	4513
Gene Symbol	MT-CO2
Uniprot ID	COX2_HUMAN
Immunogen	A synthetic peptide corresponding to a sequence within amino acids 100-200 of mouse MTCO2 (NP_904331.1).
Immunogen Region	100-200
Specificity	
Immunogen Sequence	



Western blot analysis of extracts of various cell lines, using MTCO2 antibody (STJ113171) at 1:800 dilution. Secondary antibody: HRP-Coat Anti-rabbit IgG (H+L) at 1:10000 dilution. Lysates/proteins: 25ug per lane. Blocking buffer: 3% nonfat dry milk in TBST. Detection: ECL Basic Kit. Exposure time: 1s.



Immunohistochemistry of paraffin-embedded mouse brain using MTCO2 rabbit polyclonal antibody (STJ113171) at dilution of 1:400 (40x lens).



Immunohistochemistry of paraffin-embedded rat kidney using MTCO2 rabbit polyclonal antibody (STJ113171) at dilution of 1:400 (40x lens).

This product is suitable for in-vitro studies under the RESEARCH USE ONLY [RUO] licence. This product must not be used as for diagnostic or other medical purposes.
St John's Laboratory Ltd, Knowledge Dock Business Centre, University Way, London, E16 2RD | Tel: 0208 223 3081