

Anti-MMP9 antibody (400-500) (STJ113113)

STJ113113

GENERAL INFORMATION

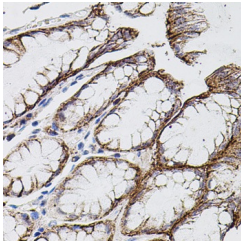
Product Type	Primary antibodies
Short Description	Rabbit polyclonal antibody anti-MMP9 (400-500) is suitable for use in Western Blot and Immunohistochemistry.
Applications	WB, IHC
Host/Source	Rabbit
Reactivity	Human, Mouse

PRODUCT PROPERTIES

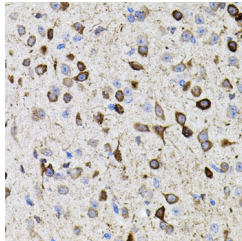
Clonality	Polyclonal
Clone ID	
Concentration	
Conjugation	Unconjugated
Purification	Affinity purification
Dilution Range	IHC 1:100-1:200
Formulation	PBS containing 0.02% Sodium Azide, 50% Glycerol, pH7.3.
Isotype	IgG
Storage Instruction	Store in a freezer at -20°C and avoid freeze-thaw cycles.

TARGET INFORMATION

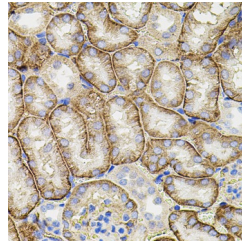
Gene ID	4318
Gene Symbol	MMP9
Uniprot ID	MMP9_HUMAN
Immunogen	A synthetic peptide corresponding to a sequence within amino acids 400-500 of human MMP9 (NP_004985.2).
Immunogen Region	400-500
Specificity	
Immunogen Sequence	



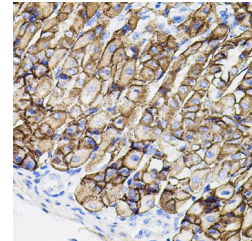
Immunohistochemistry of paraffin-embedded human stomach using MMP9 antibody (STJ113113) at dilution of 1:100 (40x lens).



Immunohistochemistry of paraffin-embedded mouse brain using MMP9 antibody (STJ113113) at dilution of 1:100 (40x lens).



Immunohistochemistry of paraffin-embedded mouse kidney using MMP9 antibody (STJ113113) at dilution of 1:100 (40x lens).



Immunohistochemistry of paraffin-embedded mouse stomach using MMP9 antibody (STJ113113) at dilution of 1:100 (40x lens).

This product is suitable for in-vitro studies under the RESEARCH USE ONLY [RUO] licence. This product must not be used as for diagnostic or other medical purposes.
St John's Laboratory Ltd, Knowledge Dock Business Centre, University Way, London, E16 2RD | Tel: 0208 223 3081