

Anti-MAP1LC3B antibody (1-100) (STJ113056)

STJ113056

GENERAL INFORMATION

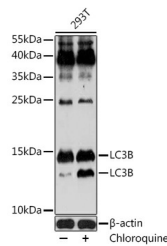
| | |
|--------------------------|--|
| Product Type | Primary antibodies |
| Short Description | Rabbit polyclonal antibody anti-LC3B (1-100) is suitable for use in Western Blot, Immunohistochemistry and Immunofluorescence. |
| Applications | WB, IHC, IF |
| Host/Source | Rabbit |
| Reactivity | Human, Mouse, Rat |

PRODUCT PROPERTIES

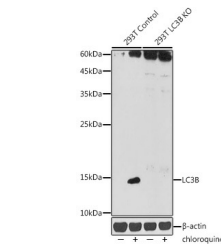
| | |
|----------------------------|---|
| Clonality | Polyclonal |
| Clone ID | |
| Concentration | |
| Conjugation | Unconjugated |
| Purification | Affinity purification |
| Dilution Range | WB 1:500-1:2000 IHC 1:50-1:200 IF 1:50-1:200 |
| Formulation | PBS containing 0.02% Sodium Azide, 50% Glycerol, pH7.3. |
| Isotype | IgG |
| Storage Instruction | Store in a freezer at -20°C and avoid freeze-thaw cycles. |

TARGET INFORMATION

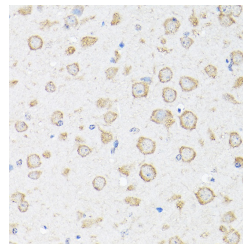
| | |
|---------------------------|---|
| Gene ID | 81631 |
| Gene Symbol | MAP1LC3B |
| Uniprot ID | MLP3B_HUMAN |
| Immunogen | A synthetic peptide corresponding to a sequence within amino acids 1-100 of human LC3B (NP_073729.1). |
| Immunogen Region | 1-100 |
| Specificity | |
| Immunogen Sequence | |



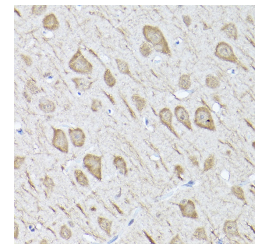
Western blot analysis of extracts of 293T cells, using LC3B antibody (STJ113056) at 1:1000 dilution. 293T cells were treated by Chloroquine (50 μ M) at 37 °C for 20 hours. Secondary antibody: HRP Goat Anti-rabbit IgG (H+L) at 1:10000 dilution. Lysates/proteins: 25 μ g per lane. Blocking buffer: 3% BSA. Detection: ECL Enhanced Kit. Exposure time: 180s.



Western blot analysis of extracts from normal (control) and LC3B knockout (KO) 293T cells, using LC3B antibody (STJ113056) at 1:1000 dilution. 293T cells were treated by Chloroquine (50 μ M) at 37 °C for 20 hours. Secondary antibody: HRP Goat Anti-rabbit IgG (H+L) at 1:10000 dilution. Lysates/proteins: 25 μ g per lane. Blocking buffer: 3% nonfat dry milk in TBST. Detection: ECL Enhanced Kit. Exposure time: 180s.



Immunohistochemistry of paraffin-embedded mouse brain using LC3B rabbit polyclonal antibody (STJ113056) at dilution of 1:100 (40x lens). Perform high pressure antigen retrieval with 10 mM citrate buffer pH 6.0 before commencing with immunohistochemistry staining protocol.



Immunohistochemistry of paraffin-embedded rat brain using LC3B rabbit polyclonal antibody (STJ113056) at dilution of 1:100 (40x lens). Perform high pressure antigen retrieval with 10 mM citrate buffer pH 6.0 before commencing with immunohistochemistry staining protocol.

This product is suitable for in-vitro studies under the RESEARCH USE ONLY [RUO] licence. This product must not be used as for diagnostic or other medical purposes.
St John's Laboratory Ltd, Knowledge Dock Business Centre, University Way, London, E16 2RD | Tel: 0208 223 3081