

Anti-RELA antibody (1-200) (STJ113019)

STJ113019

GENERAL INFORMATION

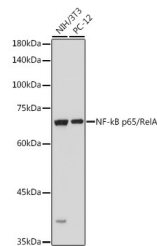
Product Type	Primary antibodies
Short Description	Rabbit polyclonal antibody anti-NF-κB p65 (1-200) is suitable for use in Western Blot, Immunohistochemistry and Immunofluorescence.
Applications	WB, IHC, IF
Host/Source	Rabbit
Reactivity	Human, Mouse, Rat

PRODUCT PROPERTIES

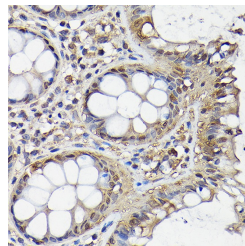
Clonality	Polyclonal
Clone ID	
Concentration	
Conjugation	Unconjugated
Purification	Affinity purification
Dilution Range	WB 1:500-1:2000 IHC 1:50-1:100 IF 1:50-1:200
Formulation	PBS containing 0.02% Sodium Azide, 50% Glycerol, pH7.3.
Isotype	IgG
Storage Instruction	Store in a freezer at -20°C and avoid freeze-thaw cycles.

TARGET INFORMATION

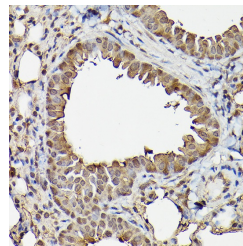
Gene ID	5970
Gene Symbol	RELA
Uniprot ID	TF65_HUMAN
Immunogen	Recombinant fusion protein containing a sequence corresponding to amino acids 1-200 of human NF-κB p65/RelA (NP_068810.3).
Immunogen Region	1-200
Specificity	
Immunogen Sequence	



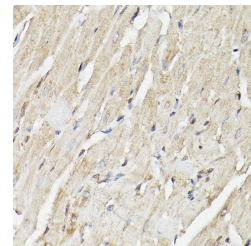
Western blot analysis of extracts of various cell lines, using NF-κB p65/RelA antibody (STJ113019) at 1:1000 dilution. Secondary antibody: HRP Goat Anti-rabbit IgG (H+L) at 1:10000 dilution. Lysates/proteins: 25ug per lane. Blocking buffer: 3% nonfat dry milk in TBST. Detection: ECL Basic Kit. Exposure time: 1s.



Immunohistochemistry of paraffin-embedded human colon using NF-κB p65/RelA rabbit polyclonal antibody (STJ113019) at dilution of 1:200 (40x lens).



Immunohistochemistry of paraffin-embedded mouse lung using NF-κB p65/RelA rabbit polyclonal antibody (STJ113019) at dilution of 1:200 (40x lens).



Immunohistochemistry of paraffin-embedded rat heart using NF-κB p65/RelA rabbit polyclonal antibody (STJ113019) at dilution of 1:200 (40x lens).