

Anti-PTEN antibody (STJ113011)

STJ113011

GENERAL INFORMATION

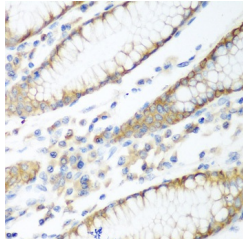
Product Type	Primary antibodies
Short Description	Rabbit polyclonal anti-PTEN antibody is suitable for use in Western Blot and Immunohistochemistry.
Background	
Applications	WB, IHC
Host/Source	Rabbit
Reactivity	Human, Mouse

PRODUCT PROPERTIES

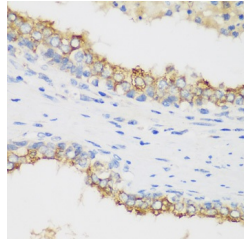
Clonality	Polyclonal
Clone ID	
Concentration	
Conjugation	Unconjugated
Purification	Affinity purification
Dilution Range	WB: 1:500-1:2000IHC: 1:50-1:100
Formulation	PBS with 0.02% sodium azide, 50% glycerol, pH7.3.
Isotype	IgG
Storage Instruction	Store at -20°C. Avoid freeze/thaw cycles.

TARGET INFORMATION

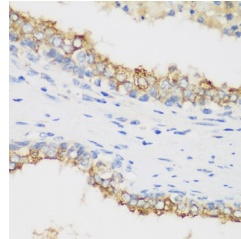
Gene ID	5728
Gene Symbol	PTEN
Uniprot ID	PTEN_HUMAN
Immunogen	Recombinant fusion protein containing a sequence corresponding to amino acids 224-403 of human PTEN (NP_000305.3).
Immunogen Region	
Specificity	
Immunogen Sequence	



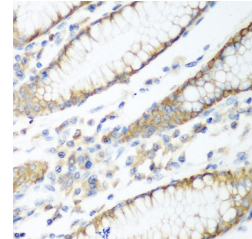
Immunohistochemistry of paraffin-embedded human stomach using PTEN antibody (STJ113011) at dilution of 1:200 (40x lens).



Immunohistochemistry of paraffin-embedded human prostate using PTEN antibody (STJ113011) at dilution of 1:200 (40x lens).



Immunohistochemistry of paraffin-embedded human prostate using PTEN antibody (STJ113011) at dilution of 1:100 (40x lens).



Immunohistochemistry of paraffin-embedded human stomach using PTEN antibody (STJ113011) at dilution of 1:100 (40x lens).

This product is suitable for in-vitro studies under the RESEARCH USE ONLY [RUO] licence. This product must not be used as for diagnostic or other medical purposes.
St John's Laboratory Ltd, Knowledge Dock Business Centre, University Way, London, E16 2RD | Tel: 0208 223 3081 | Fax: 0207 681 2580