

Anti-SLC16A3 antibody (371-465) (STJ112566)

STJ112566

GENERAL INFORMATION

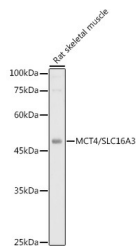
Product Type	Primary antibodies
Short Description	Rabbit polyclonal antibody anti-MCT4/SLC16A3 (371-465) is suitable for use in Western Blot and Immunohistochemistry.
Applications	WB, IHC
Host/Source	Rabbit
Reactivity	Human, Rat

PRODUCT PROPERTIES

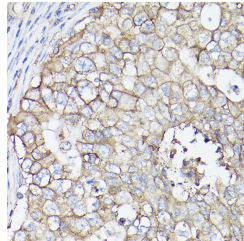
Clonality	Polyclonal
Clone ID	
Concentration	
Conjugation	Unconjugated
Purification	Affinity purification
Dilution Range	WB 1:500-1:2000 IHC 1:50-1:200
Formulation	PBS containing 0.02% Sodium Azide, 50% Glycerol, pH7.3.
Isotype	IgG
Storage Instruction	Store in a freezer at -20°C and avoid freeze-thaw cycles.

TARGET INFORMATION

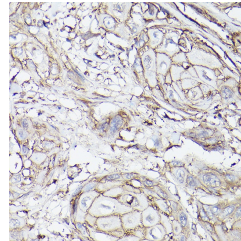
Gene ID	9123
Gene Symbol	SLC16A3
Uniprot ID	MOT4_HUMAN
Immunogen	Recombinant fusion protein containing a sequence corresponding to amino acids 371-465 of human MCT4/SLC16A3 (NP_004198.1).
Immunogen Region	371-465
Specificity	
Immunogen Sequence	



Western blot analysis of extracts of Rat skeletal muscle, using MCT4/SLC16A3 antibody (STJ112566) at 1:1000 dilution. Secondary antibody: HRP Goat Anti-rabbit IgG (H+L) at 1:10000 dilution. Lysates/proteins: 25ug per lane. Blocking buffer: 3% nonfat dry milk in TBST. Detection: ECL Basic Kit. Exposure time: 30s.



Immunohistochemistry of paraffin-embedded human breast cancer using MCT4/SLC16A3 rabbit polyclonal antibody (STJ112566) at dilution of 1:100 (40x lens). Perform high pressure antigen retrieval with 10 mM citrate buffer pH 6, 0 before commencing with immunohistochemistry staining protocol.



Immunohistochemistry of paraffin-embedded human esophageal cancer using MCT4/SLC16A3 rabbit polyclonal antibody (STJ112566) at dilution of 1:100 (40x lens). Perform high pressure antigen retrieval with 10 mM citrate buffer pH 6, 0 before commencing with immunohistochemistry staining protocol.