

Anti-PPP2R2B antibody (160-260) (STJ112518)

STJ112518

GENERAL INFORMATION

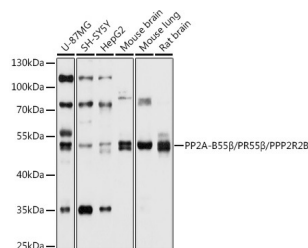
Product Type	Primary antibodies
Short Description	Rabbit polyclonal antibody anti-PPP2R2B (160-260) is suitable for use in Western Blot.
Applications	WB
Host/Source	Rabbit
Reactivity	Human, Mouse, Rat

PRODUCT PROPERTIES

Clonality	Polyclonal
Clone ID	
Concentration	
Conjugation	Unconjugated
Purification	Affinity purification
Dilution Range	WB 1:1000-1:2000
Formulation	PBS containing 0.02% Sodium Azide, 50% Glycerol, pH7.3.
Isotype	IgG
Storage	Store in a freezer at -20°C and avoid freeze-thaw cycles.
Instruction	

TARGET INFORMATION

Gene ID	5521
Gene Symbol	PPP2R2B
Uniprot ID	2ABB_HUMAN
Immunogen	Recombinant fusion protein containing a sequence corresponding to amino acids 160-260 of human PP2A-B55 Beta/PR55 Beta/PP2A-B55 Beta/PR55 Beta/PPP2R2B (NP_858060.2).
Immunogen Region	160-260
Specificity	
Immunogen Sequence	



Western blot analysis of extracts of various cell lines, using PP2A-B55 Beta/PR55 Beta/PP2A-B55 Beta/PR55 Beta/PPP2R2B antibody (STJ112518) at 1:1000 dilution. Secondary antibody: HRP Goat Anti-rabbit IgG (H+L) at 1:10000 dilution. Lysates/proteins: 25µg per lane. Blocking buffer: 3% nonfat dry milk in TBST. Detection: ECL Basic Kit. Exposure time: 5s.

This product is suitable for in-vitro studies under the RESEARCH USE ONLY [RUO] licence. This product must not be used as for diagnostic or other medical purposes.
 St John's Laboratory Ltd, Knowledge Dock Business Centre, University Way, London, E16 2RD | Tel: 0208 223 3081