

Anti-ULBP1 antibody (26-216) (STJ112508)

STJ112508

GENERAL INFORMATION

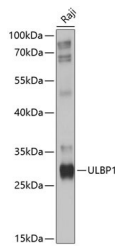
Product Type	Primary antibodies
Short Description	Rabbit polyclonal antibody anti-ULBP1 (26-216) is suitable for use in Western Blot and Immunohistochemistry.
Applications	WB, IHC
Host/Source	Rabbit
Reactivity	Human, Mouse

PRODUCT PROPERTIES

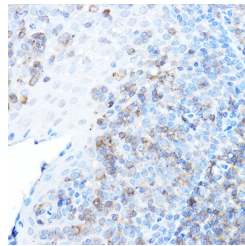
Clonality	Polyclonal
Clone ID	
Concentration	
Conjugation	Unconjugated
Purification	Affinity purification
Dilution Range	WB 1:1000-1:2000 IHC 1:50-1:200
Formulation	PBS containing 0.02% Sodium Azide, 50% Glycerol, pH7.3.
Isotype	IgG
Storage Instruction	Store in a freezer at -20°C and avoid freeze-thaw cycles.

TARGET INFORMATION

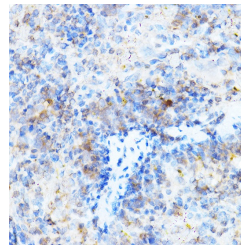
Gene ID	80329
Gene Symbol	ULBP1
Uniprot ID	ULBP1_HUMAN
Immunogen	Recombinant fusion protein containing a sequence corresponding to amino acids 26-216 of human ULBP1 (NP_079494.1).
Immunogen Region	26-216
Specificity	
Immunogen Sequence	



Western blot analysis of extracts of Raji cells, using ULBP1 antibody (STJ112508) at 1:10000 dilution. Secondary antibody: HRP-Coat Anti-rabbit IgG (H+L) at 1:10000 dilution. Lysates/proteins: 25µg per lane. Blocking buffer: 3% nonfat dry milk in TBST. Detection: ECL Basic Kit. Exposure time: 10s.



Immunohistochemistry of paraffin-embedded human tonsil using ULBP1 rabbit polyclonal antibody (STJ112508) at dilution of 1:500 (40x lens).



Immunohistochemistry of paraffin-embedded mouse spleen using ULBP1 rabbit polyclonal antibody (STJ112508) at dilution of 1:500 (40x lens).

This product is suitable for in-vitro studies under the RESEARCH USE ONLY [RUO] licence. This product must not be used as for diagnostic or other medical purposes.
St John's Laboratory Ltd, Knowledge Dock Business Centre, University Way, London, E16 2RD | Tel: 0208 223 3081