

Anti-EIF2B5 antibody (442-721) (STJ112301)

STJ112301

GENERAL INFORMATION

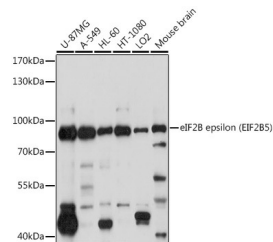
Product Type	Primary antibodies
Short Description	Rabbit polyclonal antibody anti-EIF2B5 (442-721) is suitable for use in Western Blot, Immunohistochemistry, Immunofluorescence and Immunoprecipitation.
Applications	WB, IHC, IF, IP
Host/Source	Rabbit
Reactivity	Human, Mouse, Rat

PRODUCT PROPERTIES

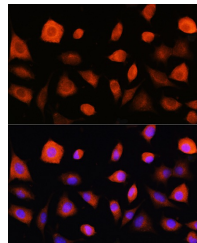
Clonality	Polyclonal
Clone ID	
Concentration	
Conjugation	Unconjugated
Purification	Affinity purification
Dilution Range	WB 1:500-1:2000 IHC 1:50-1:200 IF 1:50-1:200 IP 1:50-1:200
Formulation	PBS containing 0.02% Sodium Azide, 50% Glycerol, pH7.3.
Isotype	IgG
Storage Instruction	Store in a freezer at -20°C and avoid freeze-thaw cycles.

TARGET INFORMATION

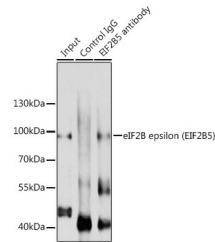
Gene ID	8893
Gene Symbol	EIF2B5
Uniprot ID	E12BE_HUMAN
Immunogen	Recombinant fusion protein containing a sequence corresponding to amino acids 442-721 of human eIF2B epsilon (eIF2B epsilon (EIF2B5)) (NP_003898.2).
Immunogen Region	442-721
Specificity	
Immunogen Sequence	



Western blot analysis of extracts of various cell lines, using eIF2B epsilon (eIF2B epsilon (EIF2B5)) antibody (STJ112301) at 1:1000 dilution. Secondary antibody: HRP Goat Anti-rabbit IgG (H+L) at 1:10000 dilution. Lysates/proteins: 25ug per lane. Blocking buffer: 3% nonfat dry milk in TBST. Detection: ECL Basic Kit. Exposure time: 10s.



Immunofluorescence analysis of L929 cells using eIF2B epsilon (eIF2B epsilon (EIF2B5)) rabbit polyclonal antibody (STJ112301) at dilution of 1:100. Blue: DAPI for nuclear staining.



Immunoprecipitation analysis of 200ug extracts of A-549 cells using 3ug eIF2B epsilon (eIF2B epsilon (EIF2B5)) antibody (STJ112301). Western blot was performed from the immunoprecipitate using eIF2B epsilon (eIF2B epsilon (EIF2B5)) antibody (STJ112301) at a dilution of 1:1000.

This product is suitable for in-vitro studies under the RESEARCH USE ONLY [RUO] licence. This product must not be used as for diagnostic or other medical purposes.

St John's Laboratory Ltd, Knowledge Dock Business Centre, University Way, London, E16 2RD | Tel: 0208 223 3081