

Anti-RPS15A antibody (1-130) (STJ112279)

STJ112279

GENERAL INFORMATION

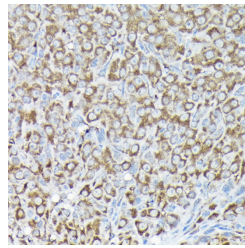
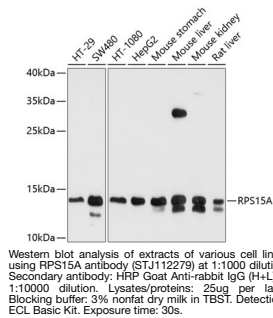
| | |
|--------------------------|--|
| Product Type | Primary antibodies |
| Short Description | Rabbit polyclonal antibody anti-RPS15A (1-130) is suitable for use in Western Blot and Immunohistochemistry. |
| Applications | WB, IHC |
| Host/Source | Rabbit |
| Reactivity | Human, Mouse, Rat |

PRODUCT PROPERTIES

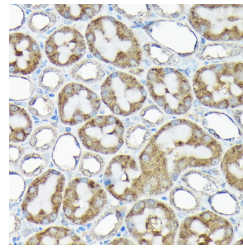
| | |
|----------------------------|---|
| Clonality | Polyclonal |
| Clone ID | |
| Concentration | |
| Conjugation | Unconjugated |
| Purification | Affinity purification |
| Dilution Range | WB 1:500-1:2000 IHC 1:50-1:200 |
| Formulation | PBS containing 0.02% Sodium Azide, 50% Glycerol, pH7.3. |
| Isotype | IgG |
| Storage Instruction | Store in a freezer at -20°C and avoid freeze-thaw cycles. |

TARGET INFORMATION

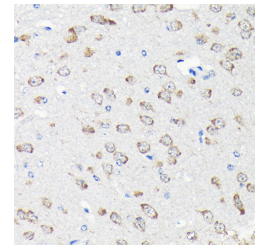
| | |
|---------------------------|--|
| Gene ID | 6210 |
| Gene Symbol | RPS15A |
| Uniprot ID | RS15A_HUMAN |
| Immunogen | Recombinant fusion protein containing a sequence corresponding to amino acids 1-130 of human RPS15A (NP_001010.2). |
| Immunogen Region | 1-130 |
| Specificity | |
| Immunogen Sequence | |



Immunohistochemistry of paraffin-embedded rat ovary using RPS15A rabbit polyclonal antibody (STJ112279) at dilution of 1:200 (40x lens).



Immunohistochemistry of paraffin-embedded rat kidney using RPS15A rabbit polyclonal antibody (STJ112279) at dilution of 1:200 (40x lens).



Immunohistochemistry of paraffin-embedded mouse brain using RPS15A rabbit polyclonal antibody (STJ112279) at dilution of 1:200 (40x lens).

This product is suitable for in-vitro studies under the RESEARCH USE ONLY [RUO] licence. This product must not be used as for diagnostic or other medical purposes.
St John's Laboratory Ltd, Knowledge Dock Business Centre, University Way, London, E16 2RD | Tel: 0208 223 3081