

Anti-EPHB3 antibody (270-560) (STJ112252)

STJ112252

GENERAL INFORMATION

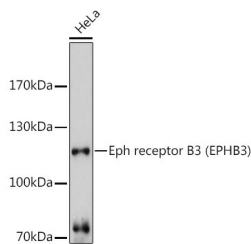
Product Type	Primary antibodies
Short Description	Rabbit polyclonal antibody anti-EPHB3 (270-560) is suitable for use in Western Blot.
Applications	WB
Host/Source	Rabbit
Reactivity	Human, Mouse, Rat

PRODUCT PROPERTIES

Clonality	Polyclonal
Clone ID	
Concentration	
Conjugation	Unconjugated
Purification	Affinity purification
Dilution Range	WB 1:500-1:2000
Formulation	PBS containing 0.02% Sodium Azide, 50% Glycerol, pH7.3.
Isotype	IgG
Storage	Store in a freezer at -20°C and avoid freeze-thaw cycles.
Instruction	

TARGET INFORMATION

Gene ID	2049
Gene Symbol	EPHB3
Uniprot ID	EPHB3_HUMAN
Immunogen	Recombinant fusion protein containing a sequence corresponding to amino acids 270-560 of human Eph receptor B3 (Eph receptor B3 (EPHB3)) (NP_004434.2).
Immunogen Region	270-560
Specificity	
Immunogen Sequence	



Western blot analysis of extracts of HeLa cells, using Eph receptor B3 (Eph receptor B3 (EPHB3)) antibody (STJ112252) at 1:3000 dilution. Secondary antibody: HRP Goat Anti-rabbit IgG (H+L) at 1:10000 dilution. Lysates/proteins: 25ug per lane. Blocking buffer: 3% nonfat dry milk in TBST. Detection: ECL Basic Kit. Exposure time: 90s.

This product is suitable for in-vitro studies under the RESEARCH USE ONLY [RUO] licence. This product must not be used as for diagnostic or other medical purposes.

St John's Laboratory Ltd, Knowledge Dock Business Centre, University Way, London, E16 2RD | Tel: 0208 223 3081