

Anti-ATP2A1 antibody (350-600) (STJ112143)

STJ112143

GENERAL INFORMATION

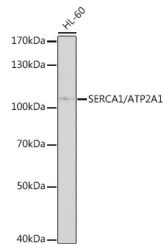
Product Type	Primary antibodies
Short Description	Rabbit polyclonal antibody anti-ATP2A1 (350-600) is suitable for use in Western Blot.
Applications	WB
Host/Source	Rabbit
Reactivity	Human

PRODUCT PROPERTIES

Clonality	Polyclonal
Clone ID	
Concentration	
Conjugation	Unconjugated
Purification	Affinity purification
Dilution Range	WB 1:200-1:1000
Formulation	PBS containing 0.02% Sodium Azide, 50% Glycerol, pH7.3.
Isotype	IgG
Storage Instruction	Store in a freezer at -20°C and avoid freeze-thaw cycles.

TARGET INFORMATION

Gene ID	487
Gene Symbol	ATP2A1
Uniprot ID	AT2A1_HUMAN
Immunogen	Recombinant fusion protein containing a sequence corresponding to amino acids 350-600 of human SERCA1/SERCA1/ATP2A1 (NP_775293.1).
Immunogen Region	350-600
Specificity	
Immunogen Sequence	



Western blot analysis of extracts of HL-60 cells, using SERCA1/SERCA1/ATP2A1 antibody (STJ112143) at 1:1000 dilution. Secondary antibody: HRP Goat Anti-rabbit IgG (H+L) at 1:10000 dilution. Lysates/proteins: 25µg per lane. Blocking buffer: 3% nonfat dry milk in TBST. Detection: ECL Enhanced Kit. Exposure time: 90s.

This product is suitable for in-vitro studies under the RESEARCH USE ONLY [RUO] licence. This product must not be used as for diagnostic or other medical purposes.
St John's Laboratory Ltd, Knowledge Dock Business Centre, University Way, London, E16 2RD | Tel: 0208 223 3081