

Anti-MEP1B antibody (480-652) (STJ112125)

STJ112125

GENERAL INFORMATION

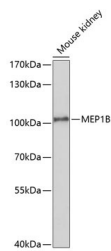
Product Type	Primary antibodies
Short Description	Rabbit polyclonal antibody anti-MEP1B (480-652) is suitable for use in Western Blot.
Applications	WB
Host/Source	Rabbit
Reactivity	Mouse

PRODUCT PROPERTIES

Clonality	Polyclonal
Clone ID	
Concentration	
Conjugation	Unconjugated
Purification	Affinity purification
Dilution Range	WB 1:500-1:1000
Formulation	PBS containing 0.02% Sodium Azide, 50% Glycerol, pH7.3.
Isotype	IgG
Storage Instruction	Store in a freezer at -20°C and avoid freeze-thaw cycles.

TARGET INFORMATION

Gene ID	4225
Gene Symbol	MEP1B
Uniprot ID	MEP1B_HUMAN
Immunogen	Recombinant fusion protein containing a sequence corresponding to amino acids 480-652 of human MEP1B (NP_005916.2).
Immunogen Region	480-652
Specificity	
Immunogen Sequence	



Western blot analysis of extracts of mouse kidney, using MEP1B antibody (STJ112125) at 1:1000 dilution.
 _Secondary antibody: HRP Goat Anti-rabbit IgG (H+L) at 1:10000 dilution. _Lysates/proteins: 25ug per lane.
 _Blocking buffer: 3% nonfat dry milk in TBST.
 _Detection: ECL Enhanced Kit. _Exposure time: 90s.

This product is suitable for in-vitro studies under the RESEARCH USE ONLY [RUO] licence. This product must not be used as for diagnostic or other medical purposes.
 St John's Laboratory Ltd, Knowledge Dock Business Centre, University Way, London, E16 2RD | Tel: 0208 223 3081