

Anti-CEP164 antibody (730-829) (STJ112005)

STJ112005

GENERAL INFORMATION

Product Type	Primary antibodies
Short Description	Rabbit polyclonal antibody anti-CEP164 (730-829) is suitable for use in Western Blot and Immunohistochemistry.
Applications	WB, IHC
Host/Source	Rabbit
Reactivity	Human, Mouse, Rat

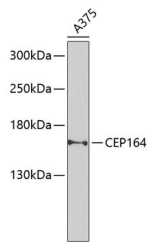
PRODUCT PROPERTIES

Clonality	Polyclonal
Clone ID	
Concentration	
Conjugation	Unconjugated
Purification	Affinity purification
Dilution Range	WB 1:500-1:2000 IHC 1:50-1:200
Formulation	PBS containing 0.02% Sodium Azide, 50% Glycerol, pH7.3.
Isotype	IgG
Storage Instruction	Store in a freezer at -20°C and avoid freeze-thaw cycles.

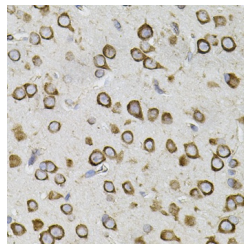
TARGET INFORMATION

Gene ID	22897
Gene Symbol	CEP164
Uniprot ID	CE164_HUMAN
Immunogen	Recombinant fusion protein containing a sequence corresponding to amino acids 730-829 of human CEP164 (NP_055771.4).
Immunogen Region	730-829

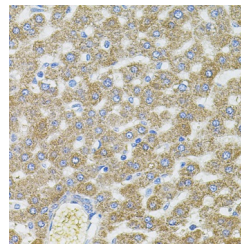
Specificity
Immunogen
Sequence



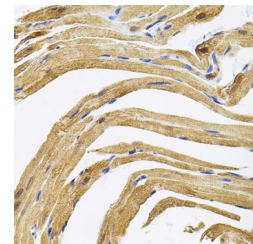
Western blot analysis of extracts of A-375 cells, using CEP164 Antibody (STJ112005) at 1:1000 dilution. Secondary antibody: HRP Goat Anti-rabbit IgG (H+L) at 1:10000 dilution. Lysates/proteins: 25ug per lane. Blocking buffer: 3% nonfat dry milk in TBST. Detection: ECL Basic Kit. Exposure time: 30s.



Immunohistochemistry of paraffin-embedded mouse brain using CEP164 antibody (STJ112005) (40x lens).



Immunohistochemistry of paraffin-embedded rat liver using CEP164 antibody (STJ112005) (40x lens).



Immunohistochemistry of paraffin-embedded rat heart using CEP164 antibody (STJ112005) (40x lens).

This product is suitable for in-vitro studies under the RESEARCH USE ONLY [RUO] licence. This product must not be used as for diagnostic or other medical purposes.
St John's Laboratory Ltd, Knowledge Dock Business Centre, University Way, London, E16 2RD | Tel: 0208 223 3081