

Anti-EBNA1BP2 antibody (1-306) (STJ111587)

STJ111587

GENERAL INFORMATION

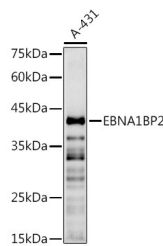
Product Type	Primary antibodies
Short Description	Rabbit polyclonal antibody anti-EBNA1BP2 (1-306) is suitable for use in Western Blot and Immunofluorescence.
Applications	WB, IF
Host/Source	Rabbit
Reactivity	Human, Mouse, Rat

PRODUCT PROPERTIES

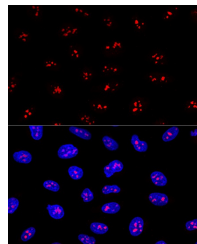
Clonality	Polyclonal
Clone ID	
Concentration	
Conjugation	Unconjugated
Purification	Affinity purification
Dilution Range	WB 1:1000-1:2000 IF 1:50-1:200
Formulation	PBS containing 0.02% Sodium Azide, 50% Glycerol, pH7.3.
Isotype	IgG
Storage Instruction	Store in a freezer at -20°C and avoid freeze-thaw cycles.

TARGET INFORMATION

Gene ID	10969
Gene Symbol	EBNA1BP2
Uniprot ID	EBP2_HUMAN
Immunogen	Recombinant fusion protein containing a sequence corresponding to amino acids 1-306 of human EBNA1BP2 (NP_006815.2).
Immunogen Region	1-306
Specificity	
Immunogen Sequence	



Western blot analysis of extracts of A-431 cells, using EBNA1BP2 antibody (STJ111587) at 1:1000 dilution. Secondary antibody: HRP Goat Anti-rabbit IgG (H+L) at 1:10000 dilution. Lysates/proteins: 25µg per lane. Blocking buffer: 3% nonfat dry milk in TBST. Detection: ECL Basic Kit. Exposure time: 30s.



Confocal immunofluorescence analysis of U2OS cells using EBNA1BP2 Polyclonal Antibody (STJ111587) at dilution of 1:200. Blue: DAPI for nuclear staining.

This product is suitable for in-vitro studies under the RESEARCH USE ONLY [RUO] licence. This product must not be used as for diagnostic or other medical purposes.
St John's Laboratory Ltd, Knowledge Dock Business Centre, University Way, London, E16 2RD | Tel: 0208 223 3081