

Anti-GATC antibody (1-136) (STJ111335)

STJ111335

GENERAL INFORMATION

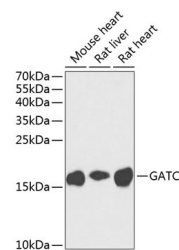
Product Type	Primary antibodies
Short Description	Rabbit polyclonal antibody anti-GATC (1-136) is suitable for use in Western Blot.
Applications	WB
Host/Source	Rabbit
Reactivity	Mouse, Rat

PRODUCT PROPERTIES

Clonality	Polyclonal
Clone ID	
Concentration	
Conjugation	Unconjugated
Purification	Affinity purification
Dilution Range	WB 1:500-1:2000
Formulation	PBS containing 0.02% Sodium Azide, 50% Glycerol, pH7.3.
Isotype	IgG
Storage Instruction	Store in a freezer at -20°C and avoid freeze-thaw cycles.

TARGET INFORMATION

Gene ID	283459
Gene Symbol	GATC
Uniprot ID	GATC_HUMAN
Immunogen	Recombinant fusion protein containing a sequence corresponding to amino acids 1-136 of human GATC (NP_789788.1).
Immunogen Region	1-136
Specificity	
Immunogen Sequence	



Western blot analysis of extracts of various cell lines, using GATC antibody (STJ111335) at 1:1000 dilution. Secondary antibody: HRP Goat Anti-rabbit IgG (H+L) at 1:10000 dilution. Lysates/proteins: 25µg per lane. Blocking buffer: 3% nonfat dry milk in TBST. Detection: ECL Enhanced Kit. Exposure time: 90s.