

Anti-L1CAM antibody (1143-1257) (STJ111291)

STJ111291

GENERAL INFORMATION

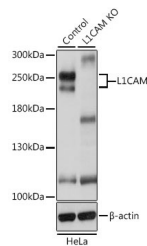
Product Type	Primary antibodies
Short Description	Rabbit polyclonal antibody anti-L1CAM (1143-1257) is suitable for use in Western Blot and Immunofluorescence.
Applications	WB, IF
Host/Source	Rabbit
Reactivity	Human, Mouse, Rat

PRODUCT PROPERTIES

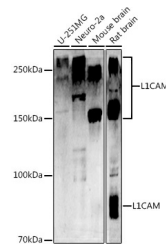
Clonality	Polyclonal
Clone ID	
Concentration	
Conjugation	Unconjugated
Purification	Affinity purification
Dilution Range	WB 1:500-1:2000 IF 1:50-1:200
Formulation	PBS containing 0.02% Sodium Azide, 50% Glycerol, pH7.3.
Isotype	IgG
Storage Instruction	Store in a freezer at -20°C and avoid freeze-thaw cycles.

TARGET INFORMATION

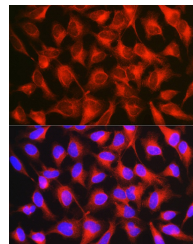
Gene ID	3897
Gene Symbol	L1CAM
Uniprot ID	L1CAM_HUMAN
Immunogen	Recombinant fusion protein containing a sequence corresponding to amino acids 1143-1257 of human L1CAM (NP_000416.1).
Immunogen Region	1143-1257
Specificity	
Immunogen Sequence	



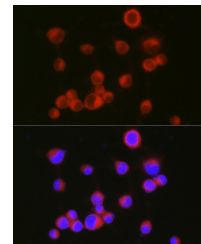
Western blot analysis of extracts from normal (control) and L1CAM knockout (KO) HeLa cells, using L1CAM antibody (STJ111291) at 1:1000 dilution. Secondary antibody: HRP Goat Anti-rabbit IgG (H+L) at 1:10000 dilution. Lysates/proteins: 25ug per lane. Blocking buffer: 3% nonfat dry milk in TBST. Detection: ECL Basic Kit. Exposure time: 1s.



Western blot analysis of extracts of various cell lines, using L1CAM antibody (STJ111291) at 1:1000 dilution. Secondary antibody: HRP Goat Anti-rabbit IgG (H+L) at 1:10000 dilution. Lysates/proteins: 25ug per lane. Blocking buffer: 3% nonfat dry milk in TBST. Detection: ECL Basic Kit. Exposure time: 30s.



Immunofluorescence analysis of HeLa cells using [KO Validated] L1CAM rabbit polyclonal antibody (STJ111291) at dilution of 1:150 (40x lens). Blue: DAPI for nuclear staining.



Immunofluorescence analysis of Neuro-2a cells using [KO Validated] L1CAM rabbit polyclonal antibody (STJ111291) at dilution of 1:150 (40x lens). Blue: DAPI for nuclear staining.

This product is suitable for in-vitro studies under the RESEARCH USE ONLY [RUO] licence. This product must not be used as for diagnostic or other medical purposes.
St John's Laboratory Ltd, Knowledge Dock Business Centre, University Way, London, E16 2RD | Tel: 0208 223 3081