

Anti-DOCK2 antibody (1551-1830) (STJ111190)

STJ111190

GENERAL INFORMATION

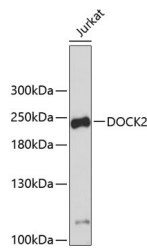
Product Type	Primary antibodies
Short Description	Rabbit polyclonal antibody anti-DOCK2 (1551-1830) is suitable for use in Western Blot, Immunofluorescence and Immunoprecipitation.
Applications	WB, IF, IP
Host/Source	Rabbit
Reactivity	Human, Mouse

PRODUCT PROPERTIES

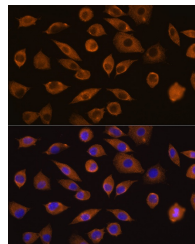
Clonality	Polyclonal
Clone ID	
Concentration	
Conjugation	Unconjugated
Purification	Affinity purification
Dilution Range	WB 1:500-1:1000 IF 1:50-1:200 IP 1:50-1:100
Formulation	PBS containing 0.02% Sodium Azide, 50% Glycerol, pH7.3.
Isotype	IgG
Storage Instruction	Store in a freezer at -20°C and avoid freeze-thaw cycles.

TARGET INFORMATION

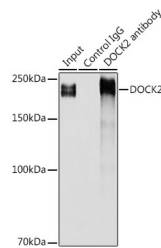
Gene ID	1794
Gene Symbol	DOCK2
Uniprot ID	DOCK2_HUMAN
Immunogen	Recombinant fusion protein containing a sequence corresponding to amino acids 1551-1830 of human DOCK2 (NP_004937.1).
Immunogen Region	1551-1830
Specificity	
Immunogen Sequence	



Western blot analysis of extracts of Jurkat cells, using DOCK2 antibody (STJ111190). Secondary antibody: HRP Goat Anti-rabbit IgG (H+L) at 1:10000 dilution. Lysates/proteins: 25µg per lane. Blocking buffer: 3% nonfat dry milk in TBST.



Immunofluorescence analysis of L929 cells using DOCK2 rabbit polyclonal antibody (STJ111190) at dilution of 1:100 (40x lens). Blue: DAPI for nuclear staining.



Immunoprecipitation analysis of 300µg extracts of Jurkat cells using 9µg DOCK2 antibody (STJ111190). Western blot was performed from the immunoprecipitate using DOCK2 antibody (STJ111190) at a dilution of 1:500.

This product is suitable for in-vitro studies under the RESEARCH USE ONLY [RUO] licence. This product must not be used as for diagnostic or other medical purposes.
St John's Laboratory Ltd, Knowledge Dock Business Centre, University Way, London, E16 2RD | Tel: 0208 223 3081