

Anti-CHRNA7 antibody (23-230) (STJ111098)

STJ111098

GENERAL INFORMATION

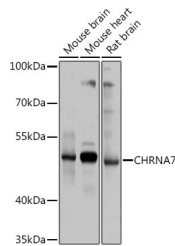
Product Type	Primary antibodies
Short Description	Rabbit polyclonal antibody anti-CHRNA7 (23-230) is suitable for use in Western Blot, Immunohistochemistry and Immunofluorescence.
Applications	WB, IHC, IF
Host/Source	Rabbit
Reactivity	Human, Mouse, Rat

PRODUCT PROPERTIES

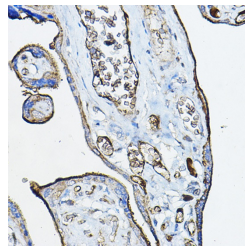
Clonality	Polyclonal
Clone ID	
Concentration	
Conjugation	Unconjugated
Purification	Affinity purification
Dilution Range	WB 1:500-1:2000 IHC 1:50-1:200 IF 1:50-1:200
Formulation	PBS containing 0.02% Sodium Azide, 50% Glycerol, pH7.3.
Isotype	IgG
Storage Instruction	Store in a freezer at -20°C and avoid freeze-thaw cycles.

TARGET INFORMATION

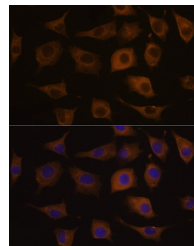
Gene ID	1139/89832
Gene Symbol	CHRNA7
Uniprot ID	ACHA7_HUMAN
Immunogen	Recombinant fusion protein containing a sequence corresponding to amino acids 23-230 of human CHRNA7 (NP_001177384.1).
Immunogen Region	23-230
Specificity	
Immunogen Sequence	



Western blot analysis of extracts of various cell lines, using CHRNA7 antibody (STJ111098) at 1:1000 dilution. Secondary antibody: HRP Goat Anti-rabbit IgG (H+L) at 1:10000 dilution. Lysates/proteins: 25µg per lane. Blocking buffer: 3% nonfat dry milk in TBST. Detection: ECL Basic Kit. Exposure time: 5s.



Immunohistochemistry of paraffin-embedded human placenta using CHRNA7 rabbit polyclonal antibody (STJ111098) at dilution of 1:100 (40x lens). Perform microwave antigen retrieval with 10 mM PBS buffer pH 7.2 before commencing with immunohistochemistry staining protocol.



Immunofluorescence analysis of L929 cells using CHRNA7 antibody (STJ111098) at dilution of 1:100. Blue: DAPI for nuclear staining.