

## Anti-CYP2B6 antibody (160-340) (STJ111092)

STJ111092

### GENERAL INFORMATION

<b>Product Type</b>	Primary antibodies
<b>Short Description</b>	Rabbit polyclonal antibody anti-CYP2B6 (160-340) is suitable for use in Western Blot and Immunohistochemistry.
<b>Applications</b>	WB, IHC
<b>Host/Source</b>	Rabbit
<b>Reactivity</b>	Human, Mouse, Rat

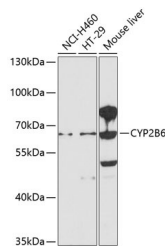
### PRODUCT PROPERTIES

<b>Clonality</b>	Polyclonal
<b>Clone ID</b>	
<b>Concentration</b>	
<b>Conjugation</b>	Unconjugated
<b>Purification</b>	Affinity purification
<b>Dilution Range</b>	WB 1:500-1:1000 IHC 1:50-1:100
<b>Formulation</b>	PBS containing 0.02% Sodium Azide, 50% Glycerol, pH7.3.
<b>Isotype</b>	IgG
<b>Storage Instruction</b>	Store in a freezer at -20°C and avoid freeze-thaw cycles.

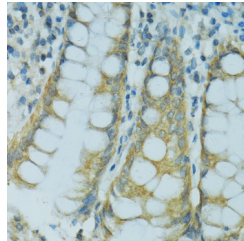
### TARGET INFORMATION

<b>Gene ID</b>	1555
<b>Gene Symbol</b>	CYP2B6
<b>Uniprot ID</b>	CP2B6_HUMAN
<b>Immunogen</b>	Recombinant fusion protein containing a sequence corresponding to amino acids 160-340 of human CYP2B6 (NP_000758.1).

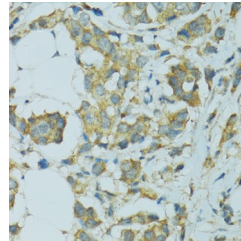
<b>Immunogen Region</b>	160-340
<b>Specificity</b>	
<b>Immunogen Sequence</b>	



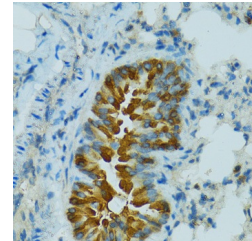
Western blot analysis of extracts of various cell lines, using CYP2B6 antibody (STJ111092) at 1:1000 dilution.  
 \_Secondary antibody: HRP Goat Anti-rabbit IgG (H+L) at 1:10000 dilution. \_Lysates/proteins: 25ug per lane.  
 \_Blocking buffer: 3% nonfat dry milk in TBST.  
 \_Detection: ECL Enhanced Kit. \_Exposure time: 90s.



Immunohistochemistry of paraffin-embedded human colon using CYP2B6 antibody (STJ111092) at dilution of 1:100 (40x lens).



Immunohistochemistry of paraffin-embedded human breast cancer using CYP2B6 antibody (STJ111092) at dilution of 1:100 (40x lens).



Immunohistochemistry of paraffin-embedded mouse lung using CYP2B6 antibody (STJ111092) at dilution of 1:100 (40x lens).

This product is suitable for in-vitro studies under the RESEARCH USE ONLY [RUO] licence. This product must not be used as for diagnostic or other medical purposes.  
 St John's Laboratory Ltd, Knowledge Dock Business Centre, University Way, London, E16 2RD | Tel: 0208 223 3081