

Anti-FLT1 antibody (20-300) (STJ111066)

STJ111066

GENERAL INFORMATION

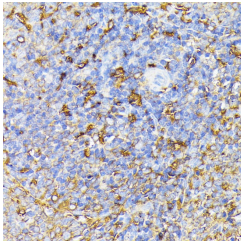
Product Type	Primary antibodies
Short Description	Rabbit polyclonal antibody anti-VEGF Receptor 1 (20-300) is suitable for use in Western Blot and Immunohistochemistry.
Applications	WB, IHC
Host/Source	Rabbit
Reactivity	Human, Mouse, Rat

PRODUCT PROPERTIES

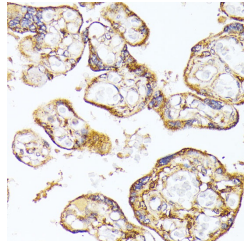
Clonality	Polyclonal
Clone ID	
Concentration	
Conjugation	Unconjugated
Purification	Affinity purification
Dilution Range	WB 1:500-1:2000 IHC 1:50-1:100
Formulation	PBS containing 0.02% Sodium Azide, 50% Glycerol, pH7.3.
Isotype	IgG
Storage Instruction	Store in a freezer at -20°C and avoid freeze-thaw cycles.

TARGET INFORMATION

Gene ID	2321
Gene Symbol	FLT1
Uniprot ID	VGFR1_HUMAN
Immunogen	Recombinant fusion protein containing a sequence corresponding to amino acids 20-300 of human VEGFR1 (NP_001153392.1).
Immunogen Region	20-300
Specificity	
Immunogen Sequence	



Immunohistochemistry of paraffin-embedded rat spleen using FLT1 antibody (STJ111066) at dilution of 1:100 (40x lens).



Immunohistochemistry of paraffin-embedded human placenta using FLT1 antibody (STJ111066) at dilution of 1:100 (40x lens).