

Anti-Phospho-MAPK14 & MAPK11 & MAPK13 & MAPK12-T180/Y182 & T180/Y182 & T180/Y182 & T183/Y1845 antibody (STJ11103773)

STJ11103773

GENERAL INFORMATION

Product Type	Primary antibodies
Short Description	Rabbit polyclonal antibody anti-Phospho-MAPK14 & MAPK11 & MAPK13 & MAPK12-T180/Y182 & T180/Y182 & T180/Y182 & T183/Y1845 is suitable for use in Western Blot.
Applications	WB
Host/Source	Rabbit
Reactivity	Human, Rat

PRODUCT PROPERTIES

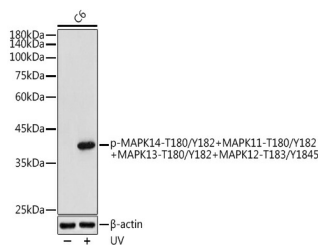
Clonality	Polyclonal
Clone ID	
Concentration	
Conjugation	Unconjugated
Purification	Affinity purification
Dilution Range	WB 1:500-1:2000
Formulation	PBS containing 0.02% Sodium Azide, 50% Glycerol, pH7.3.
Isotype	IgG
Storage	Store in a freezer at -20°C and avoid freeze-thaw cycles.
Instruction	

TARGET INFORMATION

Gene ID	6300 1432 5600 MAPK12 MAPK14 MK12_HUMAN MK14_HUMAN MK11_HUMAN <
----------------	---

Immunogen A phospho specific peptide corresponding to residues surrounding T180/Y182 of human MAPK14

Immunogen Region Specificity Immunogen Sequence



Western blot analysis of extracts of C6 cells, using Phospho-MAPK14-T180/Y182+MAPK11-T180/Y182+MAPK13-T180/Y182+MAPK12-T183/Y1845 antibody (STJ11103773) at 1:500 dilution. C6 cells were treated by UV at room temperature for 15-30 minutes. Secondary antibody: HRP Goat Anti-rabbit IgG (H+L) at 1:10000 dilution. Lysates/proteins: 25ug per lane. Blocking buffer: 3% nonfat dry milk in TBST. Detection: ECL Enhanced Kit. Exposure time: 180s.

This product is suitable for in-vitro studies under the RESEARCH USE ONLY [RUO] licence. This product must not be used as for diagnostic or other medical purposes.

St John's Laboratory Ltd, Knowledge Dock Business Centre, University Way, London, E16 2RD | Tel: 0208 223 3081