

## Anti-Phospho-TDP-43/TARDB-S409/S410 antibody (STJ11103763)

STJ11103763

### GENERAL INFORMATION

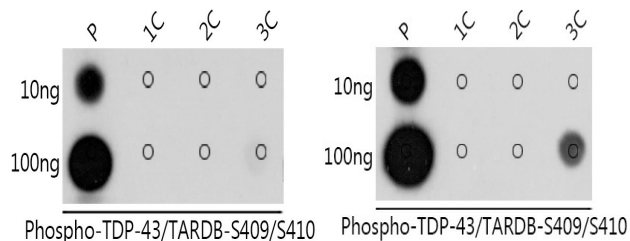
<b>Product Type</b>	Primary antibodies
<b>Short Description</b>	Rabbit polyclonal antibody anti-Phospho-TDP-43/TARDB-S409/S410 is suitable for use in Western Blot.
<b>Applications</b>	WB
<b>Host/Source</b>	Rabbit
<b>Reactivity</b>	Human

### PRODUCT PROPERTIES

<b>Clonality</b>	Polyclonal
<b>Clone ID</b>	
<b>Concentration</b>	
<b>Conjugation</b>	Unconjugated
<b>Purification</b>	Affinity purification
<b>Dilution Range</b>	WB 1:500-1:2000
<b>Formulation</b>	PBS containing 0.02% Sodium Azide, 50% Glycerol, pH7.3.
<b>Isotype</b>	IgG
<b>Storage Instruction</b>	Store in a freezer at -20°C and avoid freeze-thaw cycles.

### TARGET INFORMATION

<b>Gene ID</b>	23435
<b>Gene Symbol</b>	TARDBP
<b>Uniprot ID</b>	TADBP_HUMAN
<b>Immunogen</b>	A phospho synthetic peptide corresponding to residues surrounding S409/S410 of Human TDP-43/TARDB.
<b>Immunogen Region</b>	
<b>Specificity</b>	
<b>Immunogen Sequence</b>	



Dot-blot analysis of all sorts of peptides using Phospho-TDP-43/TARDB-S409/S410 antibody (STJ11103763) at 1:1000 dilution. Exposure time: 1s. NA NA NA

Dot-blot analysis of all sorts of peptides using Phospho-TDP-43/TARDB-S409/S410 antibody (STJ11103763) at 1:1000 dilution. Exposure time: 10s.

This product is suitable for in-vitro studies under the RESEARCH USE ONLY [RUO] licence. This product must not be used as for diagnostic or other medical purposes.  
 St John's Laboratory Ltd, Knowledge Dock Business Centre, University Way, London, E16 2RD | Tel: 0208 223 3081