

## Anti-Phospho-BRD4-S1083 antibody (STJ11103761)

STJ11103761

### GENERAL INFORMATION

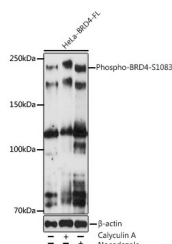
<b>Product Type</b>	Primary antibodies
<b>Short Description</b>	Rabbit monoclonal antibody anti-Phospho-BRD4-S1083 is suitable for use in Western Blot.
<b>Applications</b>	WB
<b>Host/Source</b>	Rabbit
<b>Reactivity</b>	Human

### PRODUCT PROPERTIES

<b>Clonality</b>	Monoclonal
<b>Clone ID</b>	
<b>Concentration</b>	
<b>Conjugation</b>	Unconjugated
<b>Purification</b>	Affinity purification
<b>Dilution Range</b>	WB 1:500-1:2000
<b>Formulation</b>	PBS containing 0.02% Sodium Azide, 50% Glycerol, pH7.3.
<b>Isotype</b>	IgG
<b>Storage Instruction</b>	Store in a freezer at -20°C and avoid freeze-thaw cycles.

### TARGET INFORMATION

<b>Gene ID</b>	23476
<b>Gene Symbol</b>	BRD4
<b>Uniprot ID</b>	BRD4_HUMAN
<b>Immunogen</b>	A synthetic peptide corresponding to a sequence within amino acids 1050 to 1150 of human Phospho-BRD4-S1083 (NP_490597.1).
<b>Immunogen Region</b>	
<b>Specificity</b>	
<b>Immunogen Sequence</b>	



Western blot analysis of extracts of various cell lines, using Phospho-BRD4-S1083 antibody (STJ11103761) at 1:500 dilution. HeLa cells were treated by Calyculin A (100 nM) at 37 °C for 30 minutes after serum-starvation overnight. HeLa cells were treated by nocodazole (50 ng/ml) at 37 °C for 20 hours. Secondary antibody: HRP Goat Anti-rabbit IgG (H+L) at 1:10000 dilution. Lysates/proteins: 25ug per lane. Blocking buffer: 3% nonfat dry milk in TBST. Detection: ECL Enhanced Kit. Exposure time: 300s.

This product is suitable for in-vitro studies under the RESEARCH USE ONLY [RUO] licence. This product must not be used as for diagnostic or other medical purposes.  
 St John's Laboratory Ltd, Knowledge Dock Business Centre, University Way, London, E16 2RD | Tel: 0208 223 3081