

Anti-Phospho-EGFR-Y1193 antibody (STJ11103746)

STJ11103746

GENERAL INFORMATION

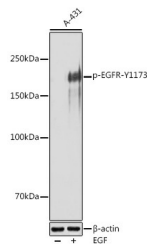
Product Type	Primary antibodies
Short Description	Rabbit polyclonal antibody anti-Phospho-EGFR-Y1193 is suitable for use in Western Blot.
Applications	WB
Host/Source	Rabbit
Reactivity	Human

PRODUCT PROPERTIES

Clonality	Polyclonal
Clone ID	
Concentration	
Conjugation	Unconjugated
Purification	Affinity purification
Dilution Range	WB 1:500-1:2000
Formulation	PBS containing 0.02% Sodium Azide, 0.05% BSA, 50% Glycerol, pH7.3.
Isotype	IgG
Storage Instruction	Store in a freezer at -20°C and avoid freeze-thaw cycles.

TARGET INFORMATION

Gene ID	1956
Gene Symbol	EGFR
Uniprot ID	EGFR_HUMAN
Immunogen	A phospho specific peptide corresponding to residues surrounding Y1173 of human EGFR
Immunogen Region	
Specificity	
Immunogen Sequence	



Western blot analysis of extracts of A-431 cells, using Phospho-EGFR-Y1173 antibody (STJ11103746) at 1:500 dilution. A-431 cells were treated by EGF (25 ug/ml) at 37 °C for 30 minutes after serum-starvation overnight. Secondary antibody: HRP-Goat Anti-rabbit IgG (H+L) at 1:10000 dilution. Lysates/proteins: 25ug per lane. Blocking buffer: 3% nonfat dry milk in TBST. Detection: ECL Basic Kit. Exposure time: 90s.

This product is suitable for in-vitro studies under the RESEARCH USE ONLY [RUO] licence. This product must not be used as for diagnostic or other medical purposes.
St John's Laboratory Ltd, Knowledge Dock Business Centre, University Way, London, E16 2RD | Tel: 0208 223 3081