

## Anti-Phospho-AKT1 & AKT2 & AKT3-S473 & S474 & S472 antibody (STJ11103745)

STJ11103745

### GENERAL INFORMATION

<b>Product Type</b>	Primary antibodies
<b>Short Description</b>	Rabbit monoclonal antibody anti-Phospho-AKT1 & AKT2 & AKT3-S473 & S474 & S472 is suitable for use in Western Blot.
<b>Applications</b>	WB
<b>Host/Source</b>	Rabbit
<b>Reactivity</b>	Human, Mouse, Rat

### PRODUCT PROPERTIES

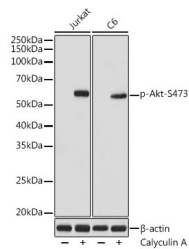
<b>Clonality</b>	Monoclonal
<b>Clone ID</b>	
<b>Concentration</b>	
<b>Conjugation</b>	Unconjugated
<b>Purification</b>	Affinity purification
<b>Dilution Range</b>	WB 1:500-1:1000
<b>Formulation</b>	PBS containing 0.02% Sodium Azide, 50% Glycerol, pH7.3.
<b>Isotype</b>	IgG
<b>Storage Instruction</b>	Store in a freezer at -20°C and avoid freeze-thaw cycles.

### TARGET INFORMATION

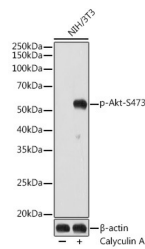
<b>Gene ID</b>	10000
	207
	208
	AKT3
	AKT1
	AKT3_HUMAN
	AKT1_HUMAN
	AKT2_HUMAN
	<

**Immunogen**  
**Immunogen Region**  
**Specificity**  
**Immunogen Sequence**

A phospho specific peptide corresponding to residues surrounding S473/S474/S472 of human AKT1/AKT2/AKT3



Western blot analysis of extracts of various cell lines, using Phospho-Akt-S473 antibody (STJ11103745) at 1:1000 dilution. Jurkat cells and C6 cells were treated by Calyculin A (100 nM) at 37 °C for 30 minutes after serum-starvation overnight. Secondary antibody: HRP Goat Anti-rabbit IgG (H+L) at 1:10000 dilution. Lysates/proteins: 25ug per lane. Blocking buffer: 3% nonfat dry milk in TBST. Detection: ECL Basic Kit. Exposure time: 1s.



Western blot analysis of extracts of NIH/3T3 cells, using Phospho-Akt-S473 antibody (STJ11103745) at 1:1000 dilution. NIH/3T3 cells were treated by Calyculin A (100 nM) at 37 °C for 30 minutes after serum-starvation overnight. Secondary antibody: HRP Goat Anti-rabbit IgG (H+L) at 1:10000 dilution. Lysates/proteins: 25ug per lane. Blocking buffer: 3% nonfat dry milk in TBST. Detection: ECL Basic Kit. Exposure time: 30s.

This product is suitable for in-vitro studies under the RESEARCH USE ONLY [RUO] licence. This product must not be used as for diagnostic or other medical purposes.  
 St John's Laboratory Ltd, Knowledge Dock Business Centre, University Way, London, E16 2RD | Tel: 0208 223 3081