

Anti-Phospho-POLR2A-S7 antibody (STJ11103724)

STJ11103724

GENERAL INFORMATION

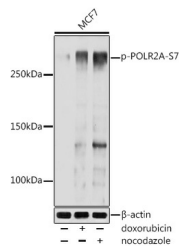
Product Type	Primary antibodies
Short Description	Rabbit polyclonal antibody anti-Phospho-POLR2A-S7 is suitable for use in Western Blot.
Applications	WB
Host/Source	Rabbit
Reactivity	Human, Mouse

PRODUCT PROPERTIES

Clonality	Polyclonal
Clone ID	
Concentration	
Conjugation	Unconjugated
Purification	Affinity purification
Dilution Range	WB 1:500-1:2000
Formulation	PBS containing 0.02% Sodium Azide, 50% Glycerol, pH7.3.
Isotype	IgG
Storage Instruction	Store in a freezer at -20°C and avoid freeze-thaw cycles.

TARGET INFORMATION

Gene ID	5430
Gene Symbol	POLR2A
Uniprot ID	RPB1_HUMAN
Immunogen	A synthetic phosphorylated peptide around of human Phospho-POLR2A-S7.
Immunogen Region	
Specificity	
Immunogen Sequence	



Western blot analysis of extracts of MCF7 cells, using Phospho-POLR2A-S7 antibody (STJ11103724) at 1:1000 dilution. MCF7 cells were treated by Doxorubicin (0.5 μ M) at 37 °C for 24 hours. MCF7 cells were treated by nocodazole (50 ng/ml) at 37 °C for 20 hours. Secondary antibody: HRP Goat Anti-rabbit IgG (H+L) at 1:10000 dilution. Lysates/proteins: 25 μ g per lane. Blocking buffer: 3% nonfat dry milk in TBST. Detection: ECL Basic Kit. Exposure time: 1s.

This product is suitable for in-vitro studies under the RESEARCH USE ONLY [RUO] licence. This product must not be used as for diagnostic or other medical purposes.
 St John's Laboratory Ltd, Knowledge Dock Business Centre, University Way, London, E16 2RD | Tel: 0208 223 3081