

## Anti-GST-Tag antibody (STJ11103710)

STJ11103710

### GENERAL INFORMATION

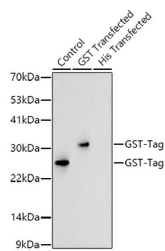
<b>Product Type</b>	Primary antibodies
<b>Short Description</b>	Rabbit monoclonal antibody anti-GST-Tag is suitable for use in Western Blot and Immunoprecipitation.
<b>Applications</b>	WB, IP
<b>Host/Source</b>	Rabbit
<b>Reactivity</b>	

### PRODUCT PROPERTIES

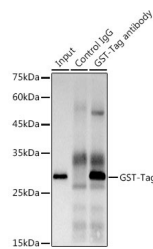
<b>Clonality</b>	Monoclonal
<b>Clone ID</b>	
<b>Concentration</b>	
<b>Conjugation</b>	Unconjugated
<b>Purification</b>	Affinity purification
<b>Dilution Range</b>	WB 1:500-1:2000 IP 1:50-1:200
<b>Formulation</b>	PBS containing 0.02% Sodium Azide, 50% Glycerol, pH7.3.
<b>Isotype</b>	IgG
<b>Storage Instruction</b>	Store in a freezer at -20°C and avoid freeze-thaw cycles.

### TARGET INFORMATION

<b>Gene ID</b>	
<b>Gene Symbol</b>	
<b>Uniprot ID</b>	
<b>Immunogen</b>	Recombinant protein of GST protein.
<b>Immunogen Region</b>	
<b>Specificity</b>	
<b>Immunogen Sequence</b>	



Western blot analysis of extracts of GST protein, using GST-Tag antibody (STJ11103710) at 1:5000 dilution. Secondary antibody: HRP Goat Anti-rabbit IgG (H+L) at 1:10000 dilution. Lysates/proteins: 25µg per lane. Blocking buffer: 3% nonfat dry milk in TBS. Detection: ECL Basic Kit. Exposure time: 3s.



Immunoprecipitation analysis of 1µg extracts of GST-Tag cells using 3µg rabbit anti GST-Tag antibody (STJ11103710). Western blot was performed from the immunoprecipitate using rabbit anti GST-Tag antibody (STJ11103710) at a dilution of 1:1000.

This product is suitable for in-vitro studies under the RESEARCH USE ONLY [RUO] licence. This product must not be used as for diagnostic or other medical purposes.  
St John's Laboratory Ltd, Knowledge Dock Business Centre, University Way, London, E16 2RD | Tel: 0208 223 3081