

Anti-Alpha-tubulin antibody (Ubiquitous chain) (STJ11103689)

STJ11103689

GENERAL INFORMATION

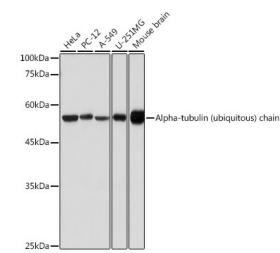
Product Type	Primary antibodies
Short Description	Rabbit polyclonal antibody anti-Alpha-tubulin (Ubiquitous chain) is suitable for use in Western Blot, Immunohistochemistry and Immunofluorescence.
Applications	WB, IHC, IF
Host/Source	Rabbit
Reactivity	Human, Mouse, Rat

PRODUCT PROPERTIES

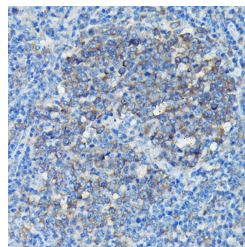
Clonality	Polyclonal
Clone ID	
Concentration	Unconjugated
Purification	Affinity purification
Dilution Range	WB 1:500-1:2000 IHC 1:50-1:200 IF 1:50-1:200
Formulation	PBS containing 0.02% Sodium Azide, 50% Glycerol, pH7.3.
Isotype	IgG
Storage	Store in a freezer at -20°C and avoid freeze-thaw cycles.
Instruction	

TARGET INFORMATION

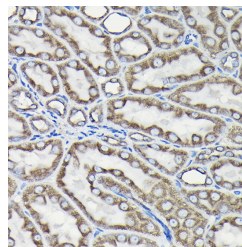
Gene ID	10376
Gene Symbol	TUBA1B
Uniprot ID	TBA1B_HUMAN
Immunogen	Recombinant fusion protein containing a sequence corresponding to amino acids 1-451 of human Alpha-tubulin (ubiquitous) chain (NP_006073.2).
Immunogen Region	Ubiquitous chain
Specificity	
Immunogen Sequence	



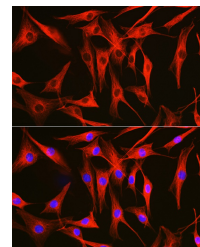
Western blot analysis of extracts of various cell lines, using Alpha-tubulin (ubiquitous) chain antibody (STJ11103689) at 1:500 dilution. Secondary antibody: HRP Goat Anti-rabbit IgG (H+L) at 1:10000 dilution. Lysates/proteins: 25ug per lane. Blocking buffer: 3% nonfat dry milk in TBST. Detection: ECL Basic Kit. Exposure time: 1s.



Immunohistochemistry of paraffin-embedded mouse spleen using Alpha-tubulin (ubiquitous) chain antibody (STJ11103689) at dilution of 1:50 (40x lens). Perform high pressure antigen retrieval with 10 mM citrate buffer pH 6.0 before commencing with immunohistochemistry staining protocol.



Immunohistochemistry of paraffin-embedded Rat kidney using Alpha-tubulin (ubiquitous) chain antibody (STJ11103689) at dilution of 1:50 (40x lens). Perform high pressure antigen retrieval with 10 mM citrate buffer pH 6.0 before commencing with immunohistochemistry staining protocol.



Immunofluorescence analysis of NIH/3T3 cells using Alpha-tubulin (ubiquitous) chain antibody (STJ11103689) at dilution of 1:100. Blue: DAPI for nuclear staining.

This product is suitable for in-vitro studies under the RESEARCH USE ONLY [RUO] licence. This product must not be used as for diagnostic or other medical purposes.

St John's Laboratory Ltd, Knowledge Dock Business Centre, University Way, London, E16 2RD | Tel: 0208 223 3081