

Anti-GAPDH antibody (STJ11103681)

STJ11103681

GENERAL INFORMATION

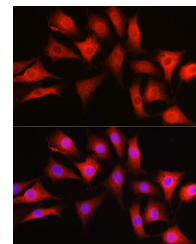
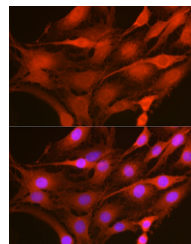
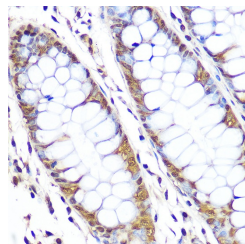
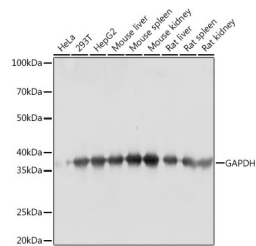
Product Type	Primary antibodies
Short Description	Rabbit polyclonal antibody anti-GAPDH is suitable for use in Western Blot, Immunohistochemistry, Immunofluorescence and Immunoprecipitation.
Applications	WB, IHC, IF, IP
Host/Source	Rabbit
Reactivity	Human, Mouse, Rat

PRODUCT PROPERTIES

Clonality	Polyclonal
Clone ID	
Concentration	
Conjugation	Unconjugated
Purification	Affinity purification
Dilution Range	WB 1:1000-1:10000 IHC 1:50-1:100 IF 1:20-1:50 IP 1:20-1:50
Formulation	PBS containing 0.02% Sodium Azide, 50% Glycerol, pH7.3.
Isotype	IgG
Storage Instruction	Store in a freezer at -20°C and avoid freeze-thaw cycles.

TARGET INFORMATION

Gene ID	2597
Gene Symbol	GAPDH
Uniprot ID	G3P_HUMAN
Immunogen	Recombinant fusion protein containing a sequence corresponding to amino acids 1-335 of human GAPDH (NP_002037.2).
Immunogen Region	
Specificity	
Immunogen Sequence	



Western blot analysis of extracts of various cell lines, using GAPDH antibody (STJ11103681) at 1:10000 dilution. Secondary antibody: HRP Goat Anti-rabbit IgG (H+L) at 1:10000 dilution. Lysates/proteins: 25ug per lane. Blocking buffer: 3% nonfat dry milk in TBST. Detection: ECL Basic Kit. Exposure time: 3s.

Immunohistochemistry of paraffin-embedded human colon using GAPDH rabbit polyclonal antibody (STJ11103681) at dilution of 1:100 (40x lens). Perform microwave antigen retrieval with 10 mM Tris/EDTA buffer pH 9.0 before commencing with immunohistochemistry staining protocol.

Immunofluorescence analysis of C6 cells using GAPDH rabbit polyclonal antibody (STJ11103681) at dilution of 1:100 (40x lens). Blue: DAPI for nuclear staining.

Immunofluorescence analysis of NIH-3T3 cells using GAPDH rabbit polyclonal antibody (STJ11103681) at dilution of 1:100 (40x lens). Blue: DAPI for nuclear staining.