

Anti-Syntaxin 16 antibody (STJ11103658)

STJ11103658

GENERAL INFORMATION

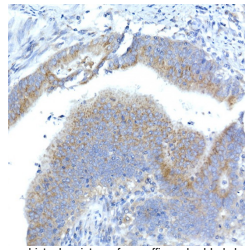
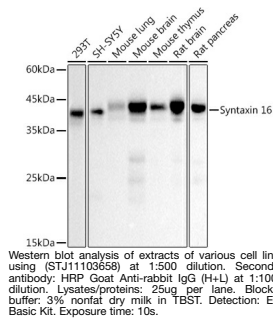
Product Type	Primary antibodies
Short Description	Rabbit monoclonal antibody anti-Syntaxin 16 is suitable for use in Western Blot and Immunohistochemistry.
Applications	WB, IHC
Host/Source	Rabbit
Reactivity	Human, Mouse, Rat

PRODUCT PROPERTIES

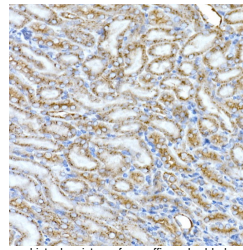
Clonality	Monoclonal
Clone ID	
Concentration	
Conjugation	Unconjugated
Purification	Affinity purification
Dilution Range	WB 1:500-1:2000 IHC 1:50-1:200
Formulation	PBS containing 0.02% Sodium Azide, 50% Glycerol, pH7.3.
Isotype	IgG
Storage Instruction	Store in a freezer at -20°C and avoid freeze-thaw cycles.

TARGET INFORMATION

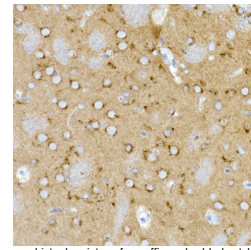
Gene ID	8675
Gene Symbol	STX16
Uniprot ID	STX16_HUMAN
Immunogen	A synthesized peptide derived from human Syntaxin 16.
Immunogen Region	
Specificity	
Immunogen Sequence	



Immunohistochemistry of paraffin-embedded human colon carcinoma using Syntaxin 16 rabbit monoclonal antibody (STJ11103658) at dilution of 1:50 (40x lens). Perform high pressure antigen retrieval with 10 mM citrate buffer pH 6.0 before commencing with immunohistochemistry staining protocol.



Immunohistochemistry of paraffin-embedded mouse kidney using Syntaxin 16 rabbit monoclonal antibody (STJ11103658) at dilution of 1:50 (40x lens). Perform high pressure antigen retrieval with 10 mM citrate buffer pH 6.0 before commencing with immunohistochemistry staining protocol.



Immunohistochemistry of paraffin-embedded rat brain using Syntaxin 16 rabbit monoclonal antibody (STJ11103658) at dilution of 1:50 (40x lens). Perform high pressure antigen retrieval with 10 mM citrate buffer pH 6.0 before commencing with immunohistochemistry staining protocol.

This product is suitable for in-vitro studies under the RESEARCH USE ONLY [RUO] licence. This product must not be used as for diagnostic or other medical purposes.
St John's Laboratory Ltd, Knowledge Dock Business Centre, University Way, London, E16 2RD | Tel: 0208 223 3081