

Anti-Cytokeratin 16 antibody (STJ11103629)

STJ11103629

GENERAL INFORMATION

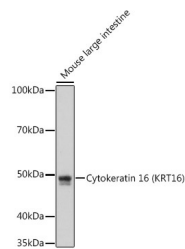
Product Type	Primary antibodies
Short Description	Rabbit monoclonal antibody anti-Cytokeratin 16 (KRT16) is suitable for use in Western Blot, Immunohistochemistry and Immunofluorescence.
Applications	WB, IHC, IF
Host/Source	Rabbit
Reactivity	Human, Mouse, Rat

PRODUCT PROPERTIES

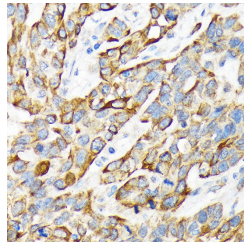
Clonality	Monoclonal
Clone ID	
Concentration	
Conjugation	Unconjugated
Purification	Affinity purification
Dilution Range	WB 1:500-1:2000 IHC 1:50-1:200 IF 1:50-1:200
Formulation	PBS containing 0.02% Sodium Azide, 0.05% BSA, 50% Glycerol, pH7.3.
Isotype	IgG
Storage Instruction	Store in a freezer at -20°C and avoid freeze-thaw cycles.

TARGET INFORMATION

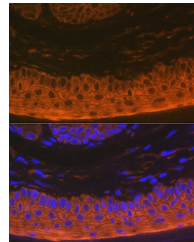
Gene ID	3868
Gene Symbol	KRT16
Uniprot ID	K1C16_HUMAN
Immunogen	A synthesized peptide derived from human Cytokeratin 16 (KRT16)
Immunogen Region	
Specificity	
Immunogen Sequence	



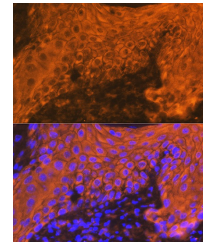
Western blot analysis of extracts of mouse large intestine cells, using Cytokeratin 16 (KRT16) antibody (STJ11103629) at 1:1000 dilution. Secondary antibody: HRP Goat Anti-rabbit IgG (H+L) at 1:10000 dilution. Lysates/proteins: 25µg per lane. Blocking buffer: 3% nonfat dry milk in TBST. Detection: ECL Enhanced Kit. Exposure time: 180s.



Immunohistochemistry of paraffin-embedded human esophageal cancer using Cytokeratin 16 (KRT16) rabbit monoclonal antibody (STJ11103629) at dilution of 1:100 (40x lens).



Immunofluorescence analysis of rat skin using Cytokeratin 16 (KRT16) rabbit monoclonal antibody (STJ11103629) at dilution of 1:100 (40x lens). Blue: DAPI for nuclear staining.



Immunofluorescence analysis of human skin using Cytokeratin 16 (KRT16) rabbit monoclonal antibody (STJ11103629) at dilution of 1:100 (40x lens). Blue: DAPI for nuclear staining.

This product is suitable for in-vitro studies under the RESEARCH USE ONLY [RUO] licence. This product must not be used as for diagnostic or other medical purposes.
St John's Laboratory Ltd, Knowledge Dock Business Centre, University Way, London, E16 2RD | Tel: 0208 223 3081