

Anti-CEACAM6 antibody (STJ11103601)

STJ11103601

GENERAL INFORMATION

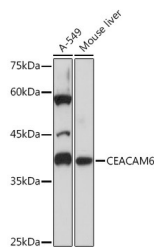
Product Type	Primary antibodies
Short Description	Rabbit monoclonal antibody anti-CEACAM6 is suitable for use in Western Blot and Immunofluorescence.
Applications	WB, IF
Host/Source	Rabbit
Reactivity	Human, Mouse, Rat

PRODUCT PROPERTIES

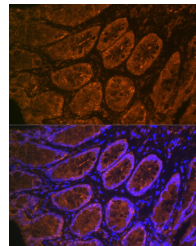
Clonality	Monoclonal
Clone ID	
Concentration	
Conjugation	Unconjugated
Purification	Affinity purification
Dilution Range	WB 1:500-1:2000 IF 1:50-1:200
Formulation	PBS containing 0.02% Sodium Azide, 0.05% BSA, 50% Glycerol, pH7.3.
Isotype	IgG
Storage Instruction	Store in a freezer at -20°C and avoid freeze-thaw cycles.

TARGET INFORMATION

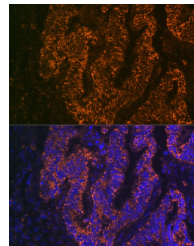
Gene ID	4680
Gene Symbol	CEACAM6
Uniprot ID	CEAM6_HUMAN
Immunogen	A synthesized peptide derived from human CEACAM6
Immunogen Region	
Specificity	
Immunogen Sequence	



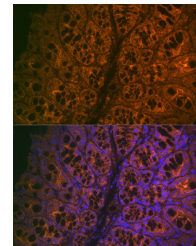
Western blot analysis of extracts of various cell lines, using CEACAM6 rabbit monoclonal antibody (STJ11103601) at 1:1000 dilution. Secondary antibody: HRP Goat Anti-rabbit IgG (H+L) at 1:10000 dilution. Lysates/proteins: 25ug per lane. Blocking buffer: 3% nonfat dry milk in TBST. Detection: ECL Basic Kit. Exposure time: 1s.



Immunofluorescence analysis of rat rectum cells using CEACAM6 rabbit monoclonal antibody (STJ11103601) at dilution of 1:100 (40x lens). Blue: DAPI for nuclear staining.



Immunofluorescence analysis of human colon carcinoma cells using CEACAM6 rabbit monoclonal antibody (STJ11103601) at dilution of 1:100 (40x lens). Blue: DAPI for nuclear staining.



Immunofluorescence analysis of mouse large intestine cells using CEACAM6 rabbit monoclonal antibody (STJ11103601) at dilution of 1:100 (40x lens). Blue: DAPI for nuclear staining.