

Anti-CHMP6 antibody (STJ11103583)

STJ11103583

GENERAL INFORMATION

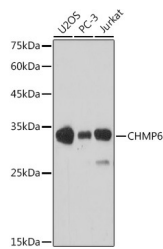
Product Type	Primary antibodies
Short Description	Rabbit polyclonal antibody anti-CHMP6 is suitable for use in Western Blot and Immunofluorescence.
Applications	WB, IF
Host/Source	Rabbit
Reactivity	Human, Mouse

PRODUCT PROPERTIES

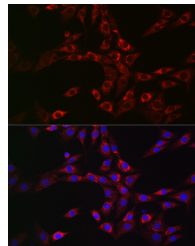
Clonality	Polyclonal
Clone ID	
Concentration	
Conjugation	Unconjugated
Purification	Affinity purification
Dilution Range	WB 1:500-1:1000 IF 1:50-1:200
Formulation	PBS containing 0.02% Sodium Azide, pH7.3.
Isotype	IgG
Storage Instruction	Store at 2-8°C

TARGET INFORMATION

Gene ID	79643
Gene Symbol	CHMP6
Uniprot ID	CHMP6_HUMAN
Immunogen	A synthetic Peptide of human CHMP6
Immunogen Region	
Specificity	
Immunogen Sequence	



Western blot analysis of extracts of various cell lines, using CHMP6 antibody (STJ11103583) at 1:1000 dilution. Secondary antibody: HRP Goat Anti-rabbit IgG (H+L) at 1:10000 dilution. Lysates/proteins: 25ug per lane. Blocking buffer: 3% nonfat dry milk in TBST. Detection: ECL Basic Kit. Exposure time: 90s.



Immunofluorescence analysis of NIH/3T3 cells using CHMP6 rabbit polyclonal antibody (STJ11103583) at dilution of 1:100 (40x lens). Blue: DAPI for nuclear staining.

This product is suitable for in-vitro studies under the RESEARCH USE ONLY [RUO] licence. This product must not be used as for diagnostic or other medical purposes.
St John's Laboratory Ltd, Knowledge Dock Business Centre, University Way, London, E16 2RD | Tel: 0208 223 3081