

Anti-CD3G antibody (STJ11103551)
STJ11103551

GENERAL INFORMATION

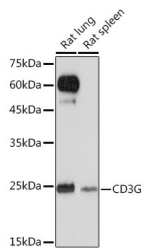
Product Type Primary antibodies
Short Description Rabbit monoclonal antibody anti-CD3G is suitable for use in Western Blot, Immunohistochemistry, Immunofluorescence and Flow Cytometry.
Applications WB, IHC, IF, FC
Host/Source Rabbit
Reactivity Human, Rat

PRODUCT PROPERTIES

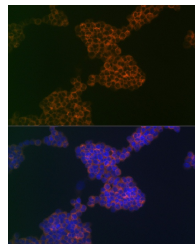
Clonality Monoclonal
Clone ID
Concentration
Conjugation Unconjugated
Purification Affinity purification
Dilution Range WB 1:500-1:2000
 IHC 1:50-1:200
 IF 1:50-1:200
 FC 1:50-1:200
Formulation PBS containing 0.02% Sodium Azide, 0.05% BSA, 50% Glycerol, pH7.3.
Isotype IgG
Storage Instruction Store in a freezer at -20°C and avoid freeze-thaw cycles.

TARGET INFORMATION

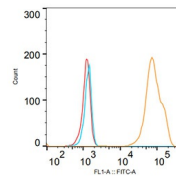
Gene ID 917
Gene Symbol CD3G
Uniprot ID CD3G_HUMAN
Immunogen A synthesized peptide derived from human CD3G
Immunogen Region
Specificity
Immunogen Sequence



Western blot analysis of extracts of various cell lines, using CD3G rabbit monoclonal antibody (STJ11103551) at 1:1000 dilution. Secondary antibody: HRP Goat Anti-rabbit IgG (H+L) at 1:10000 dilution. Lysates/proteins: 25µg per lane. Blocking buffer: 3% nonfat dry milk in TBST. Detection: ECL Basic Kit. Exposure time: 120s.

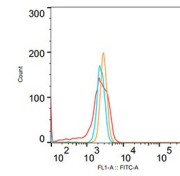


Immunofluorescence analysis of Jurkat cells using CD3G rabbit monoclonal antibody (STJ11103551) at dilution of 1:100 (40x lens). Blue: DAPI for nuclear staining.



Sample Name	Subst Name	Count
CD3G-AC042	Isotype Cells	100
CD3G-STJ11103551	Single Cells	200
CD3G-AC042	Isotype Cells	100

Flow cytometry: Jurkat cells were stained with rabbit IgG isotype control (AC042, 10 µg/ml, blue line) or CD3G rabbit monoclonal antibody (STJ11103551, 2.5 µg/ml, orange line) followed by goat anti-rabbit polyclonal antibody FITC (1:200 dilution) staining. Non-fluorescently stained Jurkat cells was used as blank control (red line).



Sample Name	Subst Name	Count
CD3G-AC042	Isotype Cells	100
CD3G-STJ11103551	Single Cells	200
CD3G-AC042	Isotype Cells	100

Flow cytometry: Raji cells were stained with rabbit IgG isotype control (AC042, 10 µg/ml, blue line) or CD3G rabbit monoclonal antibody (STJ11103551, 2.5 µg/ml, orange line) followed by goat anti-rabbit polyclonal antibody FITC (1:200 dilution) staining. Non-fluorescently stained Raji cells was used as blank control (red line).