

Anti-TrkA+B+C antibody (STJ11103502)

STJ11103502

GENERAL INFORMATION

Product Type	Primary antibodies
Short Description	Rabbit monoclonal antibody anti-TrkA+B+C is suitable for use in Western Blot and Immunohistochemistry.
Applications	WB, IHC
Host/Source	Rabbit
Reactivity	Human, Mouse, Rat

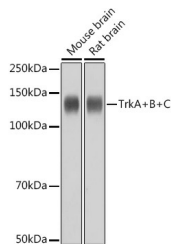
PRODUCT PROPERTIES

Clonality	Monoclonal
Clone ID	
Concentration	
Conjugation	Unconjugated
Purification	Affinity purification
Dilution Range	WB 1:500-1:2000 IHC 1:50-1:200
Formulation	PBS containing 0.02% Sodium Azide, 0.05% BSA, 50% Glycerol, pH7.3.
Isotype	IgG
Storage Instruction	Store in a freezer at -20°C and avoid freeze-thaw cycles.

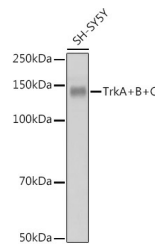
TARGET INFORMATION

Gene ID	4916 4914 4915 NTRK3 NTRK1 NTRK3_HUMAN NTRK1_HUMAN NTRK2_HUMAN
----------------	---

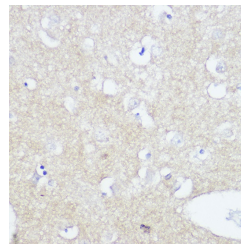
Immunogen A synthesized peptide derived from human TrkA+B+C.
Immunogen Region
Specificity
Immunogen Sequence



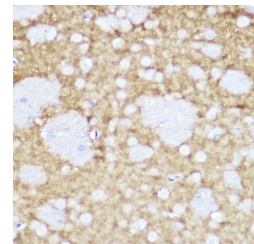
Western blot analysis of extracts of various cell lines, using TrkA+B+C antibody (STJ11103502) at 1:1000 dilution. Secondary antibody: HRP Goat Anti-rabbit IgG (H+L) at 1:10000 dilution. Lysates/proteins: 25ug per lane. Blocking buffer: 3% nonfat dry milk in TBST. Detection: ECL Basic Kit. Exposure time: 1s.



Western blot analysis of extracts of SH-SY5Y cells, using TrkA+B+C antibody (STJ11103502) at 1:1000 dilution. Secondary antibody: HRP Goat Anti-rabbit IgG (H+L) at 1:10000 dilution. Lysates/proteins: 25ug per lane. Blocking buffer: 3% nonfat dry milk in TBST. Detection: ECL Basic Kit. Exposure time: 180s.



Immunohistochemistry of paraffin-embedded human brain using TrkA+B+C rabbit monoclonal antibody (STJ11103502) at dilution of 1:100 (40x lens). Perform high pressure antigen retrieval with 10 mM citrate buffer pH 6.0 before commencing with immunohistochemistry staining protocol.



Immunohistochemistry of paraffin-embedded mouse brain using TrkA+B+C rabbit monoclonal antibody (STJ11103502) at dilution of 1:100 (40x lens). Perform high pressure antigen retrieval with 10 mM citrate buffer pH 6.0 before commencing with immunohistochemistry staining protocol.

This product is suitable for in-vitro studies under the RESEARCH USE ONLY [RUO] licence. This product must not be used as for diagnostic or other medical purposes.
 St John's Laboratory Ltd, Knowledge Dock Business Centre, University Way, London, E16 2RD | Tel: 0208 223 3081