

Anti-MRP1/ABCC1 antibody (STJ11103479)

STJ11103479

GENERAL INFORMATION

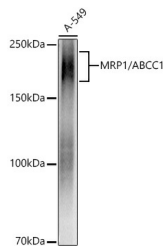
| | |
|--------------------------|---|
| Product Type | Primary antibodies |
| Short Description | Rabbit monoclonal antibody anti-MRP1/ABCC1 is suitable for use in Western Blot. |
| Applications | WB |
| Host/Source | Rabbit |
| Reactivity | Human |

PRODUCT PROPERTIES

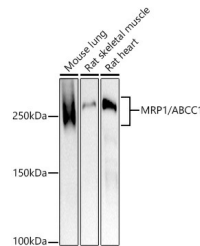
| | |
|----------------------------|--|
| Clonality | Monoclonal |
| Clone ID | |
| Concentration | |
| Conjugation | Unconjugated |
| Purification | Affinity purification |
| Dilution Range | WB 1:500-1:2000 |
| Formulation | PBS containing 0.02% Sodium Azide, 0.05% BSA, 50% Glycerol, pH7.3. |
| Isotype | IgG |
| Storage Instruction | Store in a freezer at -20°C and avoid freeze-thaw cycles. |

TARGET INFORMATION

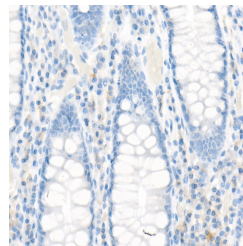
| | |
|---------------------------|---|
| Gene ID | 4363 |
| Gene Symbol | ABCC1 |
| Uniprot ID | MRP1_HUMAN |
| Immunogen | A synthesized peptide derived from human MRP1/ABCC1 |
| Immunogen Region | |
| Specificity | |
| Immunogen Sequence | |



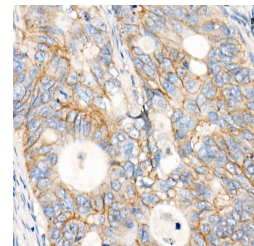
Western blot analysis of extracts of A-549 cells, using MRP1/ABCC1 antibody (STJ11103479) at 1:1000 dilution. Secondary antibody: HRP Goat Anti-rabbit IgG (H+L) at 1:10000 dilution. Lysates/proteins: 25ug per lane. Blocking buffer: 3% nonfat dry milk in TBST. Detection: ECL Basic Kit. Exposure time: 1S.



Western blot analysis of extracts of various cell lines, using MRP1/ABCC1 antibody (STJ11103479) at 1:1000 dilution. Secondary antibody: HRP Goat Anti-rabbit IgG (H+L) at 1:10000 dilution. Lysates/proteins: 25ug per lane. Blocking buffer: 3% nonfat dry milk in TBST. Detection: ECL Basic Kit. Exposure time: 180s.



Immunohistochemistry of paraffin-embedded Human colon using MRP1/ABCC1 antibody (STJ11103479) at dilution of 1:100 (40x lens). Perform high pressure antigen retrieval with 10 mM citrate buffer pH 6. 0 before commencing with immunohistochemistry staining protocol.



Immunohistochemistry of paraffin-embedded human colon carcinoma using MRP1/ABCC1 antibody (STJ11103479) at dilution of 1:100 (40x lens). Perform high pressure antigen retrieval with 10 mM citrate buffer pH 6. 0 before commencing with immunohistochemistry staining protocol.

This product is suitable for in-vitro studies under the RESEARCH USE ONLY [RUO] licence. This product must not be used as for diagnostic or other medical purposes.
St John's Laboratory Ltd, Knowledge Dock Business Centre, University Way, London, E16 2RD | Tel: 0208 223 3081