

Anti-Fluorescein FITC antibody (STJ11103455)
STJ11103455

GENERAL INFORMATION

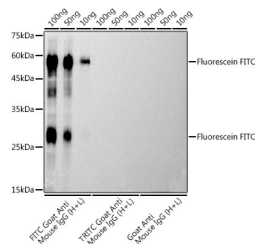
Product Type	Primary antibodies
Short Description	Rabbit monoclonal antibody anti-Fluorescein FITC is suitable for use in Western Blot.
Applications	WB
Host/Source	Rabbit
Reactivity	

PRODUCT PROPERTIES

Clonality	Monoclonal
Clone ID	
Concentration	
Conjugation	Unconjugated
Purification	Affinity purification
Dilution Range	WB 1:500-1:2000
Formulation	PBS containing 0.02% Sodium Azide, 50% Glycerol, pH7.3.
Isotype	IgG
Storage Instruction	Store in a freezer at -20°C and avoid freeze-thaw cycles.

TARGET INFORMATION

Gene ID	
Gene Symbol	
Uniprot ID	
Immunogen	Chemical compounds corresponding to Fluorescein FITC.
Immunogen Region	
Specificity	
Immunogen Sequence	



*The Fluorescein FITC rabbit polyclonal antibody (STJ11103455) are tested in Western blot against FITC Goat Anti-mouse IgG (H+L), TRITC Goat Anti-mouse IgG (H+L) and Goat Anti-mouse IgG (H+L) Secondary antibody: HRP Goat Anti-rabbit IgG (H+L) at 1:10000 dilution. Lysates/proteins: Refer to figures. Blocking buffer: 3% nonfat dry milk in TBST. Detection: ECL Basic Kit. Exposure time: 10s. *

This product is suitable for in-vitro studies under the RESEARCH USE ONLY [RUO] licence. This product must not be used as for diagnostic or other medical purposes.
St John's Laboratory Ltd, Knowledge Dock Business Centre, University Way, London, E16 2RD | Tel: 0208 223 3081