

Anti-AUTS2 antibody (STJ11103329)

STJ11103329

GENERAL INFORMATION

Product Type	Primary antibodies
Short Description	Rabbit polyclonal antibody anti-AUTS2 is suitable for use in Western Blot and Immunofluorescence.
Applications	WB, IF
Host/Source	Rabbit
Reactivity	Human, Mouse, Rat

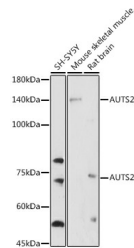
PRODUCT PROPERTIES

Clonality	Polyclonal
Clone ID	
Concentration	
Conjugation	Unconjugated
Purification	Affinity purification
Dilution Range	WB 1:500-1:2000 IF 1:50-1:200
Formulation	PBS containing 0.02% Sodium Azide, 50% Glycerol, pH7.3.
Isotype	IgG
Storage Instruction	Store in a freezer at -20°C and avoid freeze-thaw cycles.

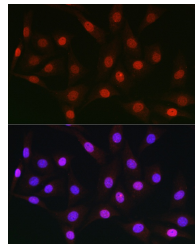
TARGET INFORMATION

Gene ID	26053
Gene Symbol	AUTS2
Uniprot ID	AUTS2_HUMAN
Immunogen	Recombinant fusion protein containing a sequence corresponding to amino acids 550-770 of human AUTS2 (NP_001120703).

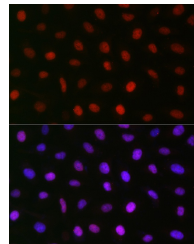
**Immunogen Region
Specificity
Immunogen
Sequence**



Western blot analysis of extracts of various cell lines, using AUTS2 antibody (STJ11103329) at 1:1000 dilution. Secondary antibody: HRP Goat Anti-rabbit IgG (H+L) at 1:10000 dilution. Lysates/proteins: 25ug per lane. Blocking buffer: 3% nonfat dry milk in TBST. Detection: ECL Enhanced Kit. Exposure time: 300s.



Immunofluorescence analysis of NIH/3T3 cells using AUTS2 rabbit polyclonal antibody (STJ11103329) at dilution of 1:50 (40x lens). Blue: DAPI for nuclear staining.



Immunofluorescence analysis of U2OS cells using AUTS2 rabbit polyclonal antibody (STJ11103329) at dilution of 1:50 (40x lens). Blue: DAPI for nuclear staining.