

Anti-PGP9.5/UCHL1 antibody (STJ11103286)

STJ11103286

GENERAL INFORMATION

| | |
|--------------------------|--|
| Product Type | Primary antibodies |
| Short Description | Rabbit monoclonal antibody anti-PGP9.5/UCHL1 is suitable for use in Western Blot, Immunohistochemistry and Immunofluorescence. |
| Applications | WB, IHC, IF |
| Host/Source | Rabbit |
| Reactivity | Human, Mouse, Rat |

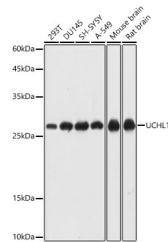
PRODUCT PROPERTIES

| | |
|----------------------------|--|
| Clonality | Monoclonal |
| Clone ID | |
| Concentration | |
| Conjugation | Unconjugated |
| Purification | Affinity purification |
| Dilution Range | WB 1:500-1:2000 IHC 1:50-1:200 IF 1:50-1:200 |
| Formulation | PBS containing 0.02% Sodium Azide, 0.05% BSA, 50% Glycerol, pH7.3. |
| Isotype | IgG |
| Storage Instruction | Store in a freezer at -20°C and avoid freeze-thaw cycles. |

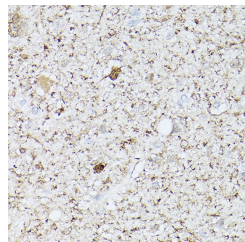
TARGET INFORMATION

| | |
|--------------------|---|
| Gene ID | 7345 |
| Gene Symbol | UCHL1 |
| Uniprot ID | UCHL1_HUMAN |
| Immunogen | Recombinant fusion protein containing a sequence corresponding to amino acids 1-220 of human PGP9.5/PGP9.5/UCHL1 (NP_004172.2). |

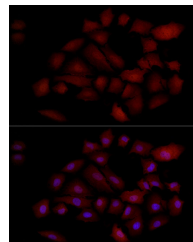
Immunogen Region
Specificity
Immunogen Sequence



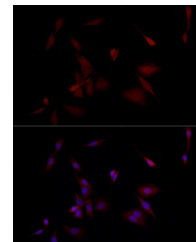
Western blot analysis of extracts of various cell lines, using UCHL1 antibody (STJ11103286) at 1:1000 dilution. Secondary antibody: HRP Goat Anti-rabbit IgG (H+L) at 1:10000 dilution. Lysates/proteins: 25µg per lane. Blocking buffer: 3% nonfat dry milk in TBST. Detection: ECL Basic Kit. Exposure time: 5s.



Immunohistochemistry of paraffin-embedded human brain using PGP9.5/PGP9.5/UCHL1 rabbit monoclonal antibody (STJ11103286) at dilution of 1:100 (40x lens). Perform high pressure antigen retrieval with 10 mM citrate buffer pH 6.0 before commencing with immunohistochemistry staining protocol.



Immunofluorescence analysis of A-549 cells using PGP9.5/UCHL1 rabbit monoclonal antibody (STJ11103286) at dilution of 1:100 (40x lens). Blue: DAPI for nuclear staining.



Immunofluorescence analysis of PC-12 cells using PGP9.5/UCHL1 rabbit monoclonal antibody (STJ11103286) at dilution of 1:100 (40x lens). Blue: DAPI for nuclear staining.

This product is suitable for in-vitro studies under the RESEARCH USE ONLY [RUO] licence. This product must not be used as for diagnostic or other medical purposes.
St John's Laboratory Ltd, Knowledge Dock Business Centre, University Way, London, E16 2RD | Tel: 0208 223 3081